

NEW

NIKKEN

NIKKEN NC TOOLING SYSTEM for MULTI-TASKING MACHINE



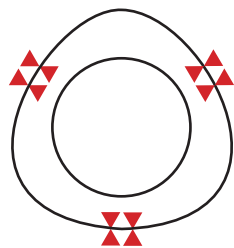
PAT.

NIKKEN KOSAKUSHO WORKS, LTD.
CAT.NO.6700

BEST SOLUTION FOR MULTI-TASKING



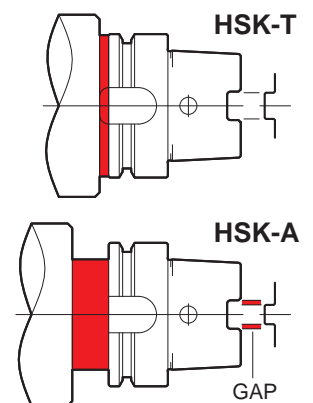
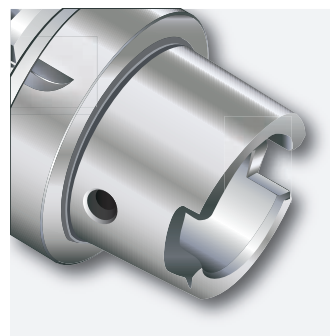
Polygon Taper



High accurate, high rigid polygon taper shank (ISO26623)

- ◆ Ideal face contact between 1/20 taper and flange
- ◆ Accuracy: high repeatability & positioning accuracy
- ◆ Rigidity: high flexural & torsional rigidity

HSK



HSK-T tool shank, perfectly interchangeable with milling type HSK-A shank (ISO12164-3, JISB6064-3)

- ◆ Advanced face contact system optimized for turning
- ◆ Accuracy: strict fitting tolerance of drive-key
- ◆ Rigidity: controlled tool length optimized for turning

2 TYPES OF TOOL SHANK

Polygon Taper

Polygon Taper Shank

TURNING Tooling

Square Tooling Holder 45°typeP3
90°typeP3
180°typeP3
Round Tooling HolderP4

Polygon Taper Shank

MILLING Tooling

Milling ChuckP5
Slim ChuckP6
Major Dream Milling ChuckP7
Major Dream HolderP7
Major Dream PRO-END MILLP8
FMH Face Mill ArborP9
FMA Face Mill ArborP9
Side Lock Holder P10

Modular Type Boring System

Base Holder for Modular Type (C6) P15
Modular Type Boring Head P15
Base Holder for Modular Type (HSK)	.. P16
Modular Type Boring System P17-18

Accessories

Straight Collet P19
Center Coolant Straight Collet P20
Front Nut P20
Slim Chuck Collet P21
SK Coolant Collet P22

HSK

HSK-T Taper Shank

TURNING Tooling

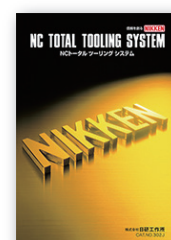
Square Tooling Holder 45°typeP11
90°typeP11
180°typeP11
Round Tooling Holder P12

HSK-A Taper Shank

MILLING Tooling

FMH Face Mill Arbor P13
FMA/FMC Face Mill Arbor P14
Side Lock Holder P14

Please refer to NC Total Tooling System catalog for all HSK tooling.



Please refer to Boring System catalog.

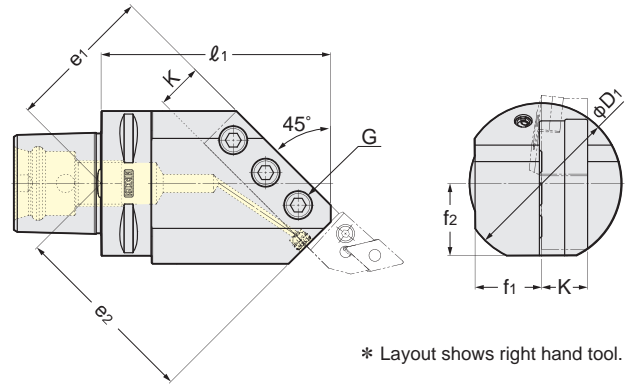


TiN Bearing Nut for Slim Chuck P23
J Type Nut for Slim Chuck P23
Adjust Screw for Slim Chuck P24
SK scale Wrench for Slim Chuck P25
Handle P26

Polygon Taper SQUARE TOOL HOLDER **NEW** **NIKKEN**

RP (Rust Proof Treatment)

**45°
degree**

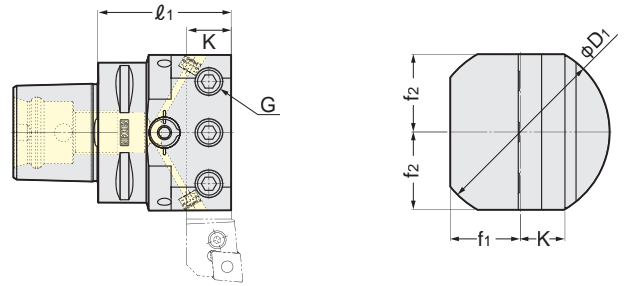


* Photo shows right hand tool.

* Layout shows right hand tool.

TAPER	Code No.	Hand	Tool Bit Size	D ₁	l ₁	e ₁	e ₂	f ₁	f ₂	K	G	Weight (kg)
C6	C6-45-TH20R-100	R	20	70	100	64	82.5	29	31.5	20	M12	2.3
	TH20L-100	L										
	TH25R-110	R	25	80	110	77	85	37.5	35	25		3.1
	TH25L-110	L										

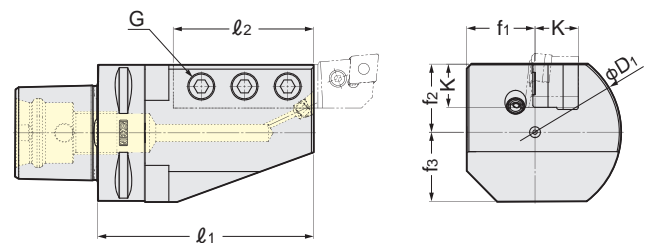
**90°
degree**



* No right or left hand.

TAPER	Code No.	Hand	Tool Bit Size	D ₁	l ₁	f ₁	f ₂	K	G	Weight (kg)
C6	C6-90-TH20N-60	N	20	80	60	31.6	35	20	M12	1.7
	TH25N-70		25					70		25

**180°
degree**



* Photo shows right hand tool.

* Layout shows right hand tool.

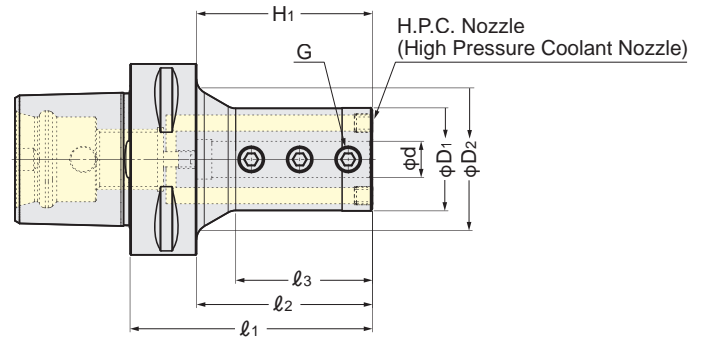
TAPER	Code No.	Hand	Tool Bit Size	D ₁	l ₁	l ₂	f ₁	f ₂	f ₃	K	G	Weight (kg)
C6	C6-180-TH20R-100	R	20	80	100	65	31.6	31.5	32	20	M12	2.5
	TH20L-100	L										
	TH25R-115	R	25	115	75	25	2.7					
	TH25L-115	L										

Polygon Taper ROUND TOOLING HOLDER

NEW

NIKKEN

RP (Rust Proof Treatment)



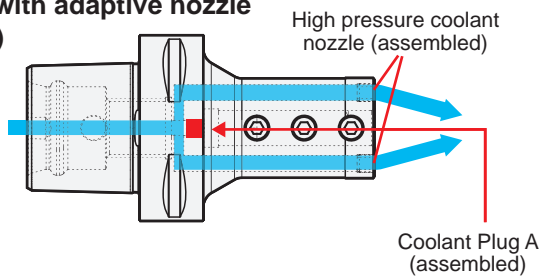
Polygon Taper
TURNING

TAPER	Code No.	d	D1	D2	l ₁	l ₂	l ₃	H ₁	G	H.P.C. Nozzle	Weight (kg)
C6	C6-SLT 8- 70	8	25	40.9	70	48	32.7	46	M 6 P=1	MZL-M6S	0.9
	SLT10- 70	10	29	42							1.0
	SLT12- 80	12	34	47							1.1
	SLT16- 90	16	40	46.4	90	68	59.7	70	M10 P=1.25	MZL-M8S	1.3
	SLT20- 90	20	50	-							1.6
	SLT25-100	25	55	-	100	78	-	75	M12 P=1.5	MZL-M8S	1.7
	SLT32-110	32	64	-	110	88	83	2.4			
	SLT40-130	40	80	70	130	108	97	98	M16 P=1.5		3.8

- ★Side-through coolant as standard.
- ★Coolant plug set is required to change to Center-thru coolant. Please see below.

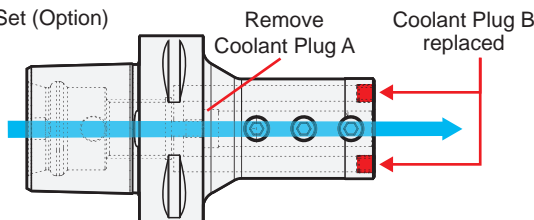
Switching Coolant Way

- Side thru with adaptive nozzle (standard)



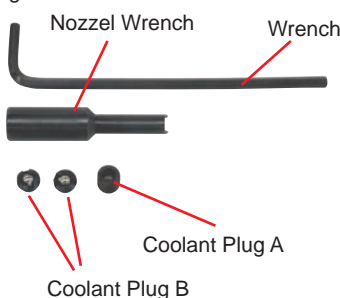
- How to change to center-thru

Coolant Plug Set (Option) is required.



Coolant Plug Set (Option)

*Available as single item.



High Pressure Coolant-thru supported (7MPa)

- Thanks to special sealing system, high pressure coolant-thru up to 7 MPa is supported.
- Good solution for deep hole non-step drilling.

RP (RUST PROOF TREATMENT)

The RP treatment creates a fine film of the contents (Fe3O4) and (Fe2O3), and penetrates into the tool holder material 1~2 micron deep. This fine film inhibits the rust and corrosion of your tool holder taper and stops it from being transmitted to your machine spindle. The RP treatment will not effect the accuracy and the hardness of your NIKKEN tool holders.



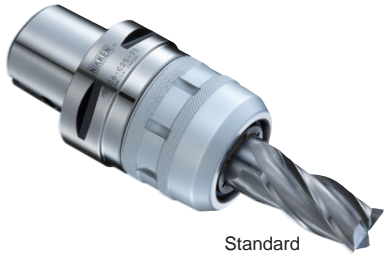
Standard 8 years used



RPT 18 years used

Round Tool Holder Code No.	Option Coolant Plug Set Code No.	Coolant Plug Set Detail			
		Coolant Plug A Code No.	Coolant Plug B Code No.	Wrench Code No.	Nozzel Wrench Code No.
C6-SLT 8- 70	S.TS-NZL (M6)	M6-6L	TS-M6S	M3-SL	NZL-L-M6
SLT10- 70					
SLT12- 80					
SLT16- 90	S.TS-NZL (M8)	M8-8L	TS-M8S	M4-SL	NZL-L-M8
SLT20- 90					
SLT25-100					
SLT32-110					
SLT40-130					

Polygon Taper MILLING CHUCK



Standard



High Speed

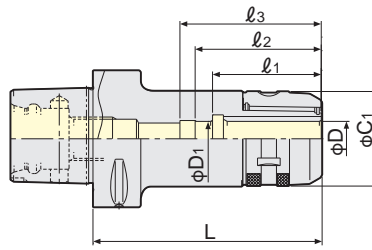


Fig.1

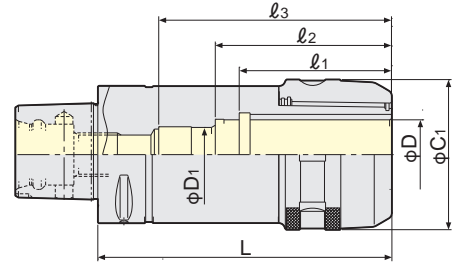


Fig.2

C

TAPER	Code No.	D	L	C ₁	D ₁	l ₁	l ₂	l ₃	Weight (kg)	Fig.	Suitable Collet	High Pressure Center Through			
C6	C6-C12- 70	12	70	33	-	-	-	48	1.0	1	KM12 CCK12	X			
	- 90		90		12	48	53	58	1.2			○			
	-120		120						1.4			○			
	-C16- 70	16	70	44	-	-	-	50	1.2		1	KM16 CCK16	X		
	- 90		90		16	50	58	65	1.4				○		
	-120		120						1.7				○		
	-C20- 75	20	75	52	-	-	-	66	1.5			1	KM20 CCK20	X	
	- 90		90		20	57	66	80	1.7					○	
	-120		120						2.0					○	
	-C25- 75	25	75	60	-	-	-	66	1.7				1	KM25 CCK25	X
	- 90		90		25	60	72	80	1.9						○
	-120		120						2.5						○
-C32- 80	32	80	69	-	-	-	71	1.9	2	KM32 CCK32				X	
-120		120		25	70	81	107	2.7						○	
C8	C8-C20-105	20	105	52	20	57	66	80		2.7	1			KM20 CCK20	○
	-135		135							3.2					○
	-165		165							3.6					○
	-C25-105	25	105	60	25	60	72	80		3.0		1		KM25 CCK25	○
	-135		135							3.6					○
	-165		165							4.2					○
	-C32-105	32	105	69	32	70	97	100		3.2			1	KM32 CCK32	○
	-135		135					4.0		○					
	-165		165					4.9		○					

★Please note the acceptable shank tolerance is h6~h7.

★Spanner is available as an option.

C16:9HC16, C20:9HC22, C25:9HC25, C32:9HC32

★Please add "G" at the end of Code No. for high speed specification, e.g C6-C16-90G

★GH handle is available as an option.

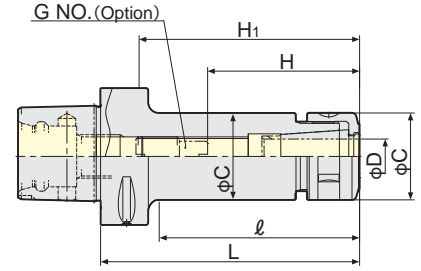
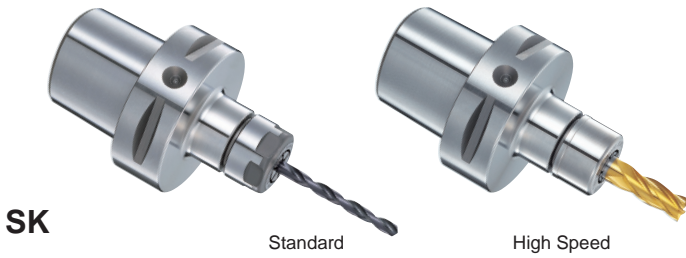
★Straight Collet for Milling Chuck P.19,P.20

★Front Nut for Milling Chuck P.20



Polygon Taper SLIM CHUCK

NIKKEN



TAPER	Code No.	φD	L	H	H ₁	ℓ	C	G No. (Option)	Weight (kg)	SK Collet	High Pressure Center Through
C6	C6-SK 6- 60	0.7 ~ 6.0	60	21-26	51	33	19.5	SKG-8-JS	0.8	SK 6	×
	- 90		90	21-35	81	63		SKG-8	0.9		×
	-120		120		111	88			1.0		×
	10- 60	1.75 ~ 10.0	60	51	51	33	27.5	-	0.9	SK10	×
	- 90		90	30-50	81	63		SKG-12L	1.0		×
	-120		120		111	93			1.1		×
	13- 60	2.75 ~ 13.0	60	51	51	33	33	-	0.9	SK13	×
	- 90		90	31-50	81	63		SKG-15	1.1		×
	-120		120	31-65	111	93			1.3		×
	16- 60	2.75 ~ 16.0	60	52	52	35	40	-	1.0	SK16	×
	- 90		90	50-60	81	63		SKG-18S	1.2		×
	-120		120	40-70	111	93		SKG-18L	1.5		×
	20- 70	3.5 ~ 20.0	70	61	61	45	48.5	-	1.2	SK20	×
	- 90		90	81	81	65			1.5		×
	-120		120	47-80	111	95		SKG-22	1.8		×
25- 75	7.5 ~ 25.4	75	66	66	50	55	-	1.4	SK25	×	
- 90		90	81	81	65			1.6		×	
-120		120	50-70	111	95		SKG-28	2.0		×	
C8	C8-SK10-120	1.75 ~ 10.0	120	30-50	120	75	27.5	SKG-12L	2.1	SK10	×
	-165		165		165	120			2.3		×
	13-120	2.75 ~ 13.0	120	31-65	120	80	33	SKG-15	2.3	SK13	×
	-165		165		165	120			2.5		×
	16-120	2.75 ~ 16.0	120	40-70	120	80	40	SKG-18L	2.5	SK16	×
	-165		165		165	125			2.8		×
	20-120	3.5 ~ 20.0	120	47-80	120	80	48.5	SKG-22	2.8	SK20	×
	-165		165		165	125			3.3		×
	25-120	7.5 ~ 25.4	120	50-85	120	80	55	SKG-28	3.0	SK25	×
-165	165			165	125			3.7	×		

★Nut is supplied as standard.

★Collet, adjust screw (G No.) and spanner are available as an option.

SK10: SKL-10, SK13: 9HC12, SK16: 9HC16, SK20: 9HC22, SK25: 9HC22

★Straight Collet for Slim Chuck P.21, P.22

★Front Nut for Slim Chuck P.23

★H₁: Maximum height when removing adjusting screw.



★All Slim Chucks are Center Through Coolant type.

★J type Nut for Slim Chuck P.23

Polygon Taper MAJOR DREAM MILLING CHUCK

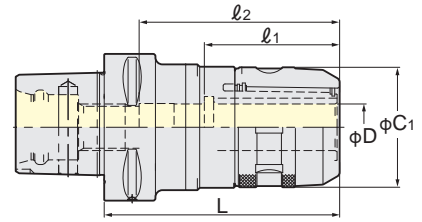
NIKKEN



MDC

Reduce cutting vibration
for multi-tasking machines.

Dampening Effect



TAPER	Code No.	C1	D	L	l ₁	l ₂	Suitable Collet	Weight (kg)
C6	C6-MDC16- 90	44	16	90	50	81	KM16 CCK16	1.4
	-MDC20-100	52	20	100	57	85	KM20 CCK20	1.8
	-MDC25-110	60	25	110	58	65	KM25 CCK25	2.2
	-MDC32-130	68	32	130	70	83	KM32 CCK32	2.5

★Please note the acceptable shank tolerance is h6~h7.

★Spanner is available as an option.

C16:9HC16, C20:9HC22, C25:9HC25, C32:9HC32

★Please add "G" at the end of Code No. for high speed specification, e.g C6-MDC16-90G

★GH handle is available as an option.

★Straight Collet for Major Dream Milling Chuck P.19,P.20

★Front Nut for Major Dream Milling Chuck P.20



Polygon Taper MAJOR DREAM HOLDER

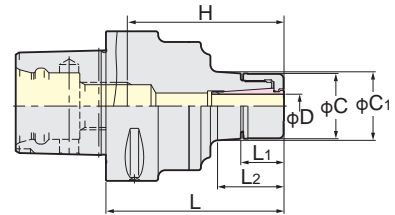
NIKKEN



MDSK

Reduce cutting vibration
for multi-tasking machines.

Dampening Effect



H:MAX. Cutter Shank Length to be inserted

TAPER	Code No.	D	L	L ₁	L ₂	C	C ₁	H	Suitable Collet	Weight (kg)
C6	C6-MDSK10- 65, 90	3.0~10.0	65,90	18.2	19,43	27.5	27.5,31	56,81	SK10-□A	1.0,1.3
	-MDSK13- 70, 90	3.0~13.0	70,90	22	24,43	33	33.0,35.9	61,81	SK13-□A	1.0,1.3
	-MDSK16- 70, 90	3.0~16.0	70,90	23	24,43	40	40.0,42.8	61,81	SK16-□A	1.0,1.5
	-MDSK20- 80, 90	4.0~20.0	80,90	25.2	39,3,50.7	48	51,52.6	70,80	SK20-□A	1.6,1.9

★Please use A type SK collet for the end milling operation.

★GH handle is available as an option. P.26

★Slim Collet for Major Dream Holder P.21,P.22

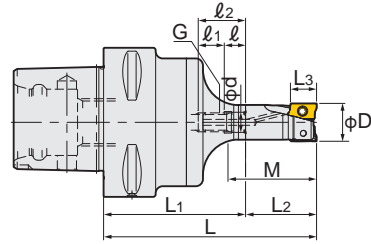
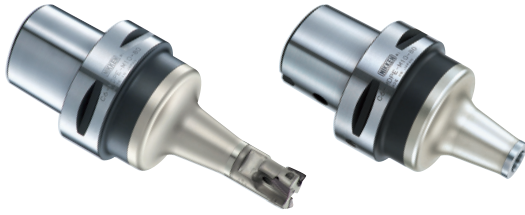
★Front Nut for Major Dream Holder P.23



GH Handle

Polygon Taper MAJOR DREAM PRO-ENDMILL

NIKKEN



C6-MDPE (Arbor+Head)

TAPER	Code No.	φD	L	L1	L2	MAX. Depth L3	M	Arbor Code No.	Head Code No.
C6	C6-MDPE16- 90, 110, 125	16	90,110,125	60,80,95	30	10	37.4	C6-MDPE-M 8- 60, 80, 95	M 8 -MDPE16-30
	-MDPE20- 95, 110, 125	20	95,110,125	65,80,95			40	-MDPE-M10- 65, 80, 95	M10-MDPE20-30
	-MDPE25- 95, 110, 125	25	95,110,125	60,75,90	35	15	45.3,47.5,47.5	-MDPE-M12- 60, 75, 90	M12-MDPE25-35
	-MDPE32-110, 125, 140	32	110,125,140	70,85,100			52.5	-MDPE-M16- 70, 85,100	M16-MDPE32-40

★2pcs of tip clamp bolt and tip clamp wrench are supplied as standard. ★Insert tip is available as an option.
 ★Centre through tool coolant is available for all series.

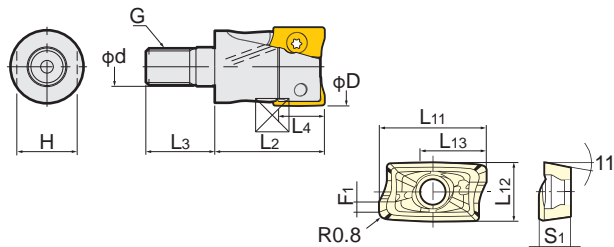
C6-MDPE-M (Arbor)

TAPER	Code No.	φD	L1	φd	ℓ	ℓ1	ℓ2	G
C6	C6-MDPE-M 8-60, 80, 95	16	60,80,95	8.5	9	11	20	M 8
	-MDPE-M10-65, 80, 95	20	65,80,95	10.5		12	21	M10
	-MDPE-M12-60, 75, 90	25	60,75,90	12.5		15	24	M12
	-MDPE-M16-70, 85,100	32	70,85,100	17		16	25	M16

★Head is available as an option. ★Centre through tool coolant is available for all series.
 ★This is interchangeable with DEPO. When the connection interface (Screw G and ID φd) is same, the cutter head of other carbide makers can be used.

INTERCHANGABLE PRO-ENDMILL HEAD

NIKKEN



AOMT

Code No.	L11	L12	L13	S1	F1
AOMT123608PEER-M	12	6.6	10	3.6	1.2
AOMT184808PEER-M	18	9	15	4.8	1.4

★Nose radius: 0.8mm only
 Please ask for other special inserts.
 ★Material: VP15TF (for steel, cast iron, hardening steel)
 Please ask for VP20RT for stainless steel or TF15 for Aluminum.
 ★Insert: 10 pieces per unit

M-MDPE (Head)

φD	Code No.	L2	L3	Max removal L4	φd	G	Number of inserts	Insert	Clamping bolt	Clamping wrench	Spanner size H
16	M 8-MDPE16-30	30	18	10	8.5	M 8	2	AOMT123608PEER-M	TPS-25	TIP07F	10
20	M10-MDPE20-30		19		10.5	M10	3				14
25	M12-MDPE25-35	35	22	15	12.5	M12	2	AOMT184808PEER-M	TPS-4	TIP15W	19
32	M16-MDPE32-40	40	23		17.0	M16	3				24

★2pcs of tip clamp bolt and tip clamp wrench are supplied as standard. ★メロコル®: trademark of Mitsubishi Materials Cooperation
 ★Insert tip is available as an option.
 ★Centre through tool coolant is available for all series.

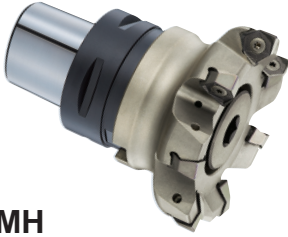
☞ **C5, C8 tool shanks are also available.**

Polygon Taper MILLING

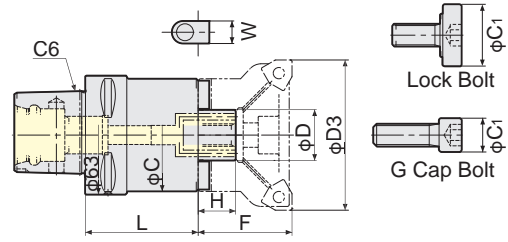
Polygon Taper FMH FACE MILL ARBOR

NEW

NIKKEN



FMH



FMH Metric Series

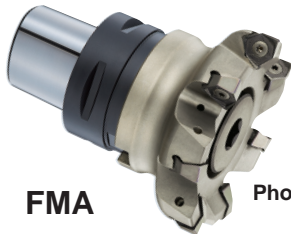
TAPER	Code No.	Arbor						Drive Key	Lock Bolt	G Cap Bolt	Weight (kg)
		φD	L	H	φC	φC1	W				
C6	C6-FMH22-47- 45	22	45	18	47	16	10	FW8	-	M10×30	1.1
	- 60		60								1.3
	- 90		90								1.7
	-FMH22-60- 45	22	45	18	60	16	10	FW8	-	M10×30	1.3
	- 60		60								1.6
	- 90		90								2.3
	-FMH27-60- 45	27	45	20	60	18	12	FW11	-	M12×35	1.3
	- 60		60								1.7
	- 90		90								2.3

FMH Inch Series

TAPER	Code No.	Arbor						Drive Key	Lock Bolt	G Cap Bolt	Weight (kg)
		φD	L	H	φC	φC1	W				
C6	C6-FMH25.4 -70- 60	25.4	60	22	70	33	9.5	FW5	FM12	-	1.5
	- 90		90								2.0
	-150		150								2.9
	-FMH31.75-96- 60	31.75	60	30	96	40	12.7	FW13	FM16	-	3.0

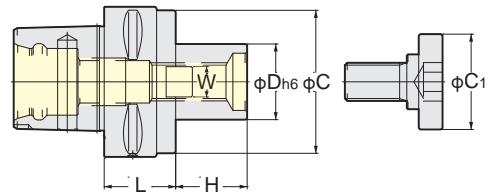
Polygon Taper FMA FACE MILL ARBOR

NIKKEN



FMA

Photo shows with Cutter.



TAPER	Code No.	Arbor						Drive Key	Lock Bolt	Weight (kg)
		D	L	H	C	C1	W			
C6	C6 - FMA25.4 - 30	25.4	30	22	50	33	9.5	FW5-C6	FM12	1.0
	- FMA31.75- 30	31.75	30	30	60	40	12.7	FW12-C6	FM16	1.4
	- FMA38.1 - 40	38.1	40	34	80	50	15.9	FW18-C6	FM20	1.6

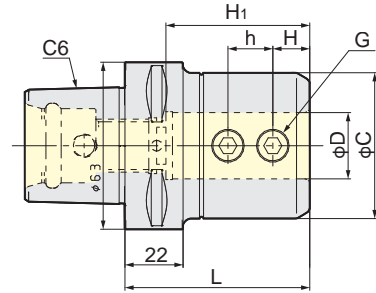
★Drive key, L-Wrench & Bolts are supplied as standard.

★Above weight is for arbor only. (Not include Face Mill Cutter)

★The bolt may not be the same as above table, please use the bolt specified by the cutter maker.

Polygon Taper SIDE LOCK HOLDER

NEW NIKKEN



TAPER	Code No.	φD	L	φC	h	H	H1	G	Weight (kg)
C6	C6-SL20C-70	20	70	50	16	12	44.5	M10 P=1.5	1.4
	SL25C-70	25	70	50	17	14	54.5	M12 P=1.25	1.5
	SL32C-75	32	75	60	16	15	59.5		1.6

COMBAT Z DRILL

NIKKEN

φ16~80mm Power of Pilot Drill & 3 Phases Heat Treatment



Power of Pilot Drill

No Vibration with Pilot Drill

L/D=3 and 4 times as standard



3 Phases Heat Treatment & Suitable Twisted Shape improves Ejecting Cutting Swarf.

3 Phases Heat Treatment

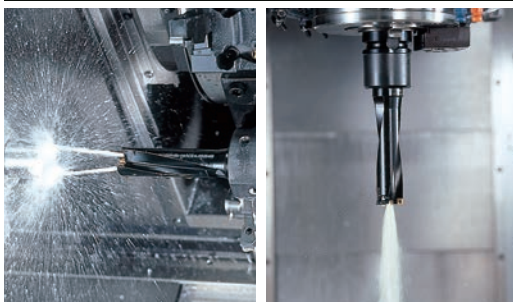
- It significantly improves Rigidity and Ejecting Cutting Swarf by suitable twisted shape and special surface treatment. Tool life of Insert and Drill grows 3 times longer.
- Pilot Drill prevents Inserts from chipping by reducing vibration.
- Powerful drilling speed of 120~150m/min. with small torque.
- Less cutting resistance with Rhomboid Inserts.

PN Treatment (Ejecting Cutting Swarf)



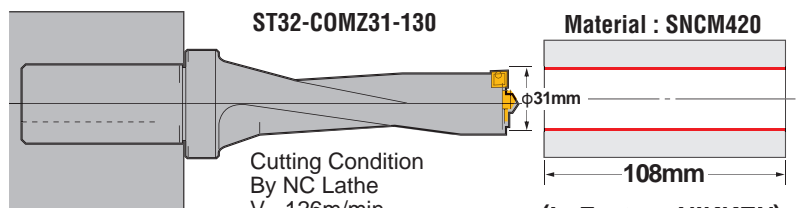
IN Treatment (HV900)

3 Phases Heat Treatment



NC Lathe

M/C



ST32-COMZ31-130
Cutting Condition
By NC Lathe
V = 126m/min
S = 1,300min⁻¹
f = 0.15mm/rev.
F = 195mm/min
Water Soluble Coolant

(In Factory NIKKEN) Machining Time = 35sec.

It can be used after total cutting length = 65mm.

Polygon Taper MILLING

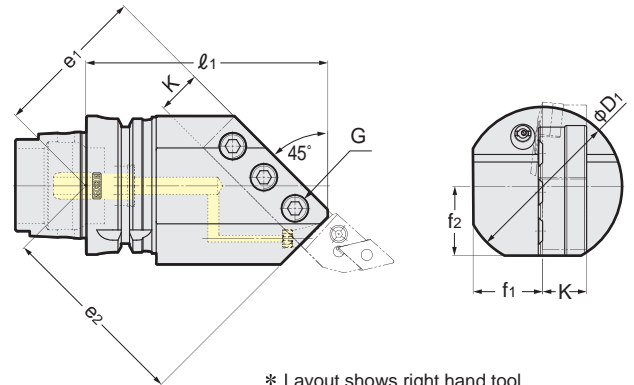
HSK SQUARE TOOL HOLDER

NEW

NIKKEN

RP (Rust Proof Treatment)

**45°
degree**

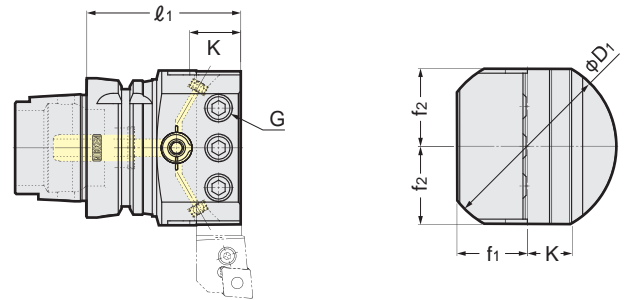


* Photo shows right hand tool.

* Layout shows right hand tool.

TAPER	Code No.	Hand	Tool Bit Size	D ₁	l ₁	e ₁	e ₂	f ₁	f ₂	K	G	Weight (kg)
HSK63T	HSK63T-45-TH20R-110	R	20	72	110	70	88	31.6	31.5	20	M12	2.5
	TH20L-110	L										
	TH25R-120	R	25	80	120	84	92	37.5	35	25		3.3
	TH25L-120	L										

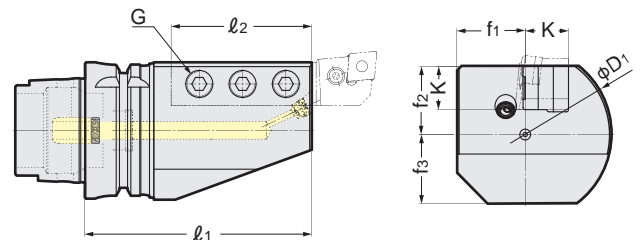
**90°
degree**



* No right or left hand.

TAPER	Code No.	Hand	Tool Bit Size	D ₁	l ₁	f ₁	f ₂	K	G	Weight (kg)
HSK63T	HSK63T-90-TH20N-70	N	20	80	70	31.6	33	20	M12	1.9
	TH25N-80		25				80			80

**180°
degree**



* Photo shows right hand tool.

* Layout shows right hand tool.

TAPER	Code No.	Hand	Tool Bit Size	D ₁	l ₁	l ₂	f ₁	f ₂	f ₃	K	G	Weight (kg)
HSK63T	HSK63T-180-TH20R-105	R	20	80	100	65	31.6	31.5	32	20	M12	2.5
	TH20L-105	L										
	TH25R-115	R	25	115	75	31.6	31.5	32	25	3.7		
	TH25L-115	L										

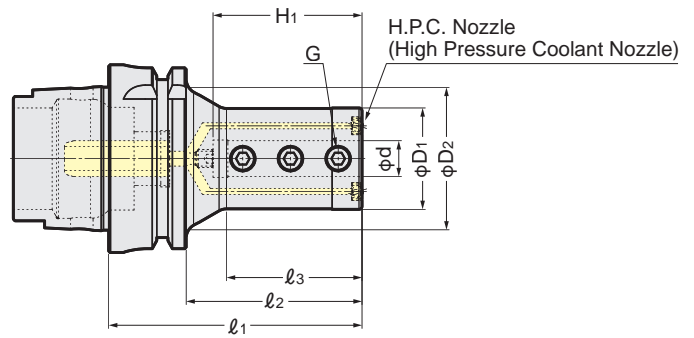
HSK TURNING

HSK ROUND TOOL HOLDER NEW

NIKKEN



RP (Rust Proof Treatment)

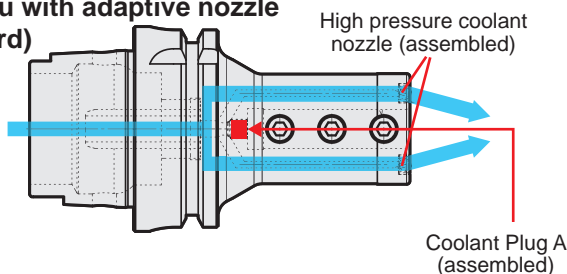


TAPER	Code No.	d	D1	D2	l1	l2	l3	H1	G	H.P.C. Nozzle	Weight (kg)
HSK63T	HSK63T-SLT 8- 75	8	25	42	75	49	32.7	37	M 6 P=1	MZL-M6S	1.0
	SLT10- 80	10	29		80	54	41.1	45	M 8 P=1		1.2
	SLT12- 85	12	34	47.8	85	59	45.5	50			1.2
	SLT16-100	16	40	54.7	100	74	59.7	65	M10 P=1.25	MZL-M8S	1.5
	SLT20-100	20	50	-					-		-
	SLT25-105	25	55	-	105	79	-	72	M12 P=1.5		1.8
	SLT32-115	32	64	62	115	89	83	79	M16 P=1.5		2.5
	SLT40-135	40	80		135	109	103	96			M16 P=1.5

★Side-through coolant as standard.
 ★Coolant plug set is required to change to Center-thru coolant.
 Please see below.

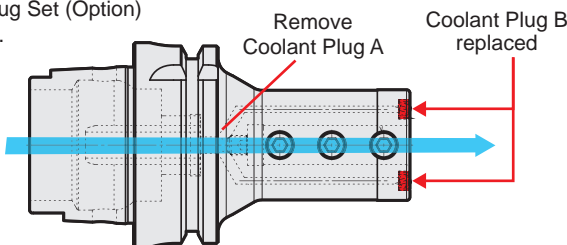
Switching Coolant Way

■ Side thru with adaptive nozzle (standard)



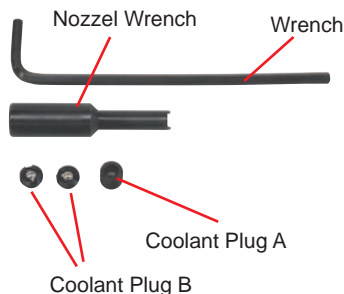
■ How to change to center-thru

Coolant Plug Set (Option) is required.



Coolant Plug Set (Option)

*Available as single item.



High Pressure Coolant-thru supported (7MPa)

- Thanks to special sealing system, high pressure coolant-thru up to 7 MPa is supported.
- Good solution for deep hole non-step drilling.

RP (RUST PROOF TREATMENT)

The RP treatment creates a fine film of the contents (Fe3O4) and (Fe2O3), and penetrates into the tool holder material 1~2 micron deep. This fine film inhibits the rust and corrosion of your tool holder taper and stops it from being transmitted to your machine spindle. The RP treatment will not effect the accuracy and the hardness of your NIKKEN tool holders.



Standard 8 years used



RPT 18 years used

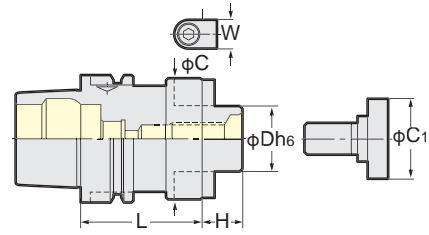
Round Tool Holder Code No.	Option Coolant Plug Set Code No.	Coolant Plug Set Detail			
		Coolant Plug A Code No.	Coolant Plug B Code No.	Wrench Code No.	Nozzel Wrench Code No.
HSK63T-SLT 8- 75	S.TS-NZL (M6)	M6-6L	TS-M6S	M3-SL	NZL-L-M6
SLT10- 80					
SLT12- 85					
SLT16-100	S.TS-NZL (M8)	M8-8L	TS-M8S	M4-SL	NZL-L-M8
SLT20-100					
SLT25-105					
SLT32-115					
SLT40-135					

HSK FMH FACE MILL ARBOR

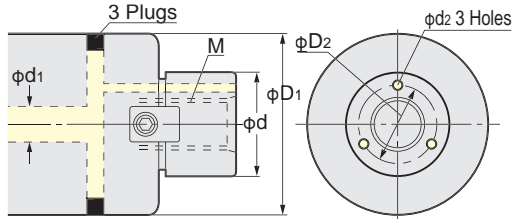


■ For Oil Hole Cutter
For High Feed Cutter

Extended model available
(Ex.) HSK100A-FMH25.4-300



FMH



Code No.	Cutter Dia.	φd	φD1	M	Coolant Hole		
					φD2	φd1	φd2
FMH22 (22.225)	φ50, φ52	22(22.225)	47	M10×1.5	16	6~8	3
	φ63, φ66		60				
FMH27 (25.4)	φ80	27(25.4)	76(70)	M12×1.75	19.5(18.5)	8~10	3.5
FMH32 (31.75)	φ100	32(31.75)	96	M16×2.0	24	10~13	4
FMH40 (38.1)	φ125	40(38.1)	100	M20×2.5	30(29)	10~15	5
FMH50.8	φ160	50.8	100	M24×3.0	37.5	15~20	7

FMH Inch Series

★Fixing dimension is basically based on FMA/FMC. ★The combination of the other cutter dia. are also available.

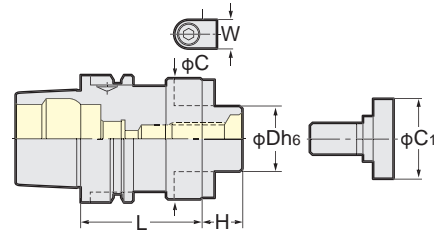
TAPER	Code No.	Arbor						Drive Key	Lock Bolt	G Cap Bolt	Weight (kg)
		D	L	H	C	C1	W				
HSK 63A	HSK 63A-FMH22.225 - 47 - 45	22.225	45	17	47	28	8	FW 3	FM10	—	1.1
	- 60		60								1.3
	- 90		90								1.7
	-150		150								2.5
	-FMH25.4 - 70 - 60	25.4	60	22	70	33	9.5	FW 5	FM12	—	1.8
	- 90		90								2.5
-150	150		4.1								
-FMH31.75 - 76 - 60	31.75	60	30	76	40	12.7	FW13	FM16	—	2.0	
- 90		90								2.7	
-105		105								3.4	
HSK100A	HSK100A-FMH22.225 - 47 -105	22.225	105	17	47	28	8	FW 3	FM10	—	4.0
	-150		150								4.7
	-200		200								5.3
	-250		250								2.9
	-FMH22.225 - 60 - 60		22.225								60
	-105	105		4.9							
	-150	150		6.1							
	-200	200		7.2							
	-250	250		3.2							
	-FMH25.4 - 70 - 60	25.4	60	22	70	33	9.5	FW 5	FM12	—	4.1
	- 90		90								5.9
	-150		150								7.4
	-200		200								3.9
	-250		250								5.5
	-FMH31.75 - 76 - 60	31.75	60	30	76	40	12.7	FW13	FM16	—	6.4
	- 90		90								9.0
	-105		105								11.8
	-150		150								4.1
	-200		200								5.9
	-FMH38.1 -100 - 60	38.1	60	34	100	50	15.9	FW19	FM20	—	4.1
- 90	90		5.9								
-105	105		6.8								
-150	150		9.6								

FMH Metric Series

TAPER	Code No.	Arbor						Drive Key	Lock Bolt	G Cap Bolt	Weight (kg)
		D	L	H	C	C1	W				
HSK 63A	HSK 63A-FMH16 - 37 - 45	16	45	17	37	20	8	FW 3	FM 8	—	1.0
	-FMH22 - 47 - 45		45								1.1
	- 60	22	60	18	47	16	10	FW 8	—	M10×30	1.3
	- 90		90								1.7
	-150		150								2.5
-FMH27 - 60 - 60	27	60	20	60	18	12	FW11	—	M12×35	1.6	
- 90		90								2.3	
HSK100A	HSK100A-FMH22 - 47 -105	22	105	18	47	16	10	FW 8	—	M10×30	3.4
	-150		150								4.0
	-200		200								4.7
	-250		250								5.4
	-FMH22 - 60 - 60		22								60
	-105	105		3.9							
	-150	150		5.4							
	-200	200		6.1							
	-250	250		7.2							
	-FMH27 - 60 - 60	27	60	20	60	18	12	FW11	—	M12×35	2.9
	- 90		90								3.7
	-150		150								5.0
	-FMH27 - 76 - 60	27	60	20	76	18	12	FW11	—	M12×35	3.2
	- 90		90								4.3
	-150		150								6.5
	-FMH32 - 96 - 60	32	60	22	96	24	14	FW16	—	M16×35	3.8
	- 90		90								5.5
-150	150		8.9								
-FMH40 -100 - 75	40	75	26	100	50	16	FW22	FM20	—	4.9	
-105		105								6.8	

HSK FMA, FMC FACE MILL ARBOR

NIKKEN



FMA, FMC

TAPER	Code No.	Dimensions						Drive Key	Lock Bolt	Weight (kg)
		D	L	H	C	C1	W			
HSK 40A	HSK 40A-FMA25.4 -50	25.4	50	22	50	33	9.5	FW5	FM12	0.7
HSK 50A	HSK 50A-FMA25.4 -55	25.4	55	22	50	33	9.5	FW5	FM12	0.8
HSK 63A	HSK 63A-FMA25.4 -50	25.4	60	22	50	33	9.5	FW5	FM12	1.2
	-FMA31.75-60	31.75		30	60	40	12.7	FW13	FM16	1.6
	-FMA38.1 -60	38.1	34	80	50	15.9	FW18	FM20	1.8	
HSK100A	HSK100A-FMA25.4 -50	25.4	75	22	58	33	9.5	FW5	FM12	2.4
	-FMA31.75-75	31.75		30	70	40	12.7	FW13	FM16	3.4
	-FMA38.1 -75	38.1		34	80	50	15.9	FW19	FM20	3.8
	-FMA50.8 -75	50.8		36	100	65	19	FW24	FM24	4.4
	-FMA47.625-75	47.625		38	128.57	-	25.4	FW26	※	5.3

★The arbor marked * requires 4 fixing bolts. (M16)

TAPER	Code No.	Dimensions						Drive Key	G Cap Bolt	Weight (kg)
		D	L	H	C	C1	W			
HSK 40A	HSK 40A-FMC22-50	22	50	18	45	16	10	FW 8	M10×30	0.6
HSK 50A	HSK 50A-FMC22-50	22	50	18	45	16	10	FW 8	M10×30	0.7
	-FMC27-60	27	60	20	60	18	12	FW11	M12×35	1.1
HSK 63A	HSK 63A-FMC22-45, 60	22	45, 60	18	45	16	10	FW 8	M10×30	1.0, 1.2
	-FMC27-60	27	60	20	60	18	12	FW11	M12×35	1.4
	-FMC32-60	32		22	85	24	14	FW16	M16×35	1.9
HSK100A	HSK100A-FMC22-50	22	50	18	45	16	10	FW 8	M10×30	2.4
	-FMC27-50	27		20	60	18	12	FW11	M12×35	2.6
	-FMC32-75	32	75	22	85	24	14	FW16	M16×35	3.4

★Drive key, L-Wrench & Bolts are supplied as standard.

★Above weight is for arbor only. (Not include Face Mill Cutter)

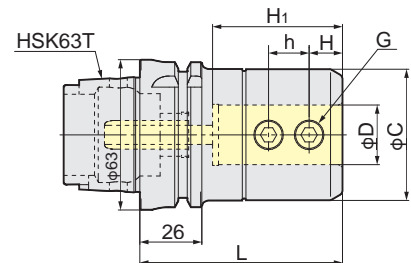
★The bolt may not be the same as above table, please use the bolt specified by the cutter maker.

★Extended length Face Mill Arbors are available as an option.

HSK100A-FMA25.4 -200, 250
 -FMA31.75-150, 200
 -FMA38.1 -150, 200

HSK SIDE LOCK HOLDER **NEW**

NIKKEN



TAPER	Code No.	φD	L	φC	h	H	H1	G	Weight (kg)
HSK63T	HSK63T-SL20C-80	20	80	50	16	12	44.5	M10 P=1.5	1.4
	SL25C-85	25	85	55	17	14	54.5	M12 P=1.25	1.5
	SL32C-90	32	90	60	16	15	59.5		1.7

HSK MILLING

BORING HEAD for MODULAR TYPE

NIKKEN

RAC

Roughing
φ25~580



BALANCE-CUT BORING ARBOR

ZMACV

Finishing
φ16~180



ZMAC ADVANCED BORING ARBOR

eMAC

Finishing

eMAC
φ6~110
eMAC-W
φ6~200



eMAC·eMAC-W BORING HEAD

★ Refer to "NIKKEN BORING SYSTEM" catalog for more detail.

DJ

Finishing
φ3~50



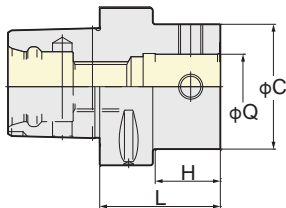
Carbide tool bits included **DJ BORING HEAD**

Polygon Taper BASE HOLDER for MODULAR TYPE

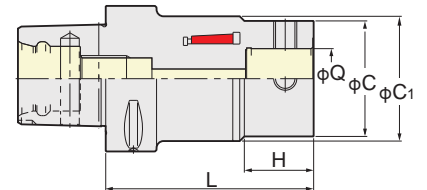
NIKKEN



Q



MDQ
(Dampening System loaded)



TAPER	Code No.	Q	L	C	C ₁	H	Weight(Kg)	ZMAC-V Boring dia
C6	C6-MDQ26-90	26	90	50	54	30	1.4	16~70
TAPER	Code No.	Q	L	C	H	Weight(Kg)	ZMAC-V Boring dia	
C6	C6-Q26-50	26	50	50	27	1.1	16~70	
	-Q34-55	34	55	64	33	1.4	16~85	

★The Coupling screw & wrench are supplied as standard.

HSK BASE HOLDER for MODULAR TYPE



Fig.1

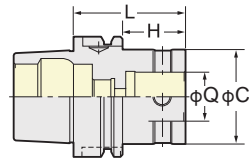


Fig.2

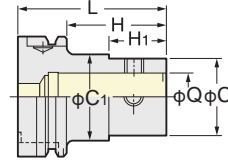
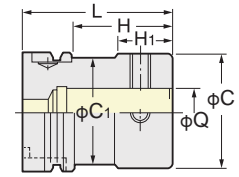


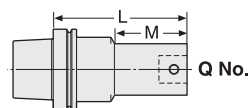
Fig.3



Q

TAPER	Code No.	Q	L	C	C1	H	H1	Coupling Bolt No.	Fig.	Weight(kg)		
HSK 63A	HSK 63A-Q 9- 80	9	80	19	30	49	5	B19	2	0.7		
	- 95N		95			64	27			0.7		
	-Q12- 80	12	80	24	35	49	12	B12	2	0.8		
	-110		110			79	50			0.8		
	-Q16- 95	16	95	31	42	64	22	B16	2	1.0		
	-125		125			94	55			1.1		
	-Q20- 80	20	80	40	50	53	27	B20	2	1.4		
	-110		110			83	60			1.3		
	-Q26- 60	26	60	50	—	33	—	B26N	1	1.0		
	- 95		95			68				113	1.5	
	-140		140			113					2.3	
	-Q34- 95	34	95	64	52.4	68	53	B34	3	2.0		
-110	110		83			68	2.4					
-Q42- 95	42	95	83	52.4	68	35	B42	3	2.5			
HSK100A	HSK100A-Q 9-110	9	110	19	40	76	5	B19	2	2.3		
	-125N		125			91	27			2.3		
	-Q12- 95	12	95	24	44	61	12	B12	2	2.3		
	-125		125			91	50			2.3		
	-Q16-125N	16	125	31	50	91	22	B16	2	2.8		
	-155		155			121	55			2.9		
	-Q20-110	20	110	40	60	76	27	B20	2	3.0		
	-125		125			91	60			2.9		
	-Q26- 65	26	65	50	—	33	—	B26N	1	2.4		
	-140		140			65			106	45	2	4.5
	-170N		170						136	110	4.6	
	-Q34-140	34	140	64	—	106	—	B34	1	4.4		
	-170		170			80			138	117	2	5.3
	-200		200						168	147	5.9	
	-Q42-125	42	125	83	—	95	—	B42	1	5.3		
	-190		190			160				7.9		
	-Q42-225A	42	225	83	—	—	—	B42	1	11.7		
	-275A		275							14.4		
-325A	325		17.1									
-375A	375		19.8									

- ★All base holders have a centre through-tool coolant hole.
- ★The Coupling screw & wrench are supplied as standard.
- ★When L length is required longer than standard, please specify the boring depth M.



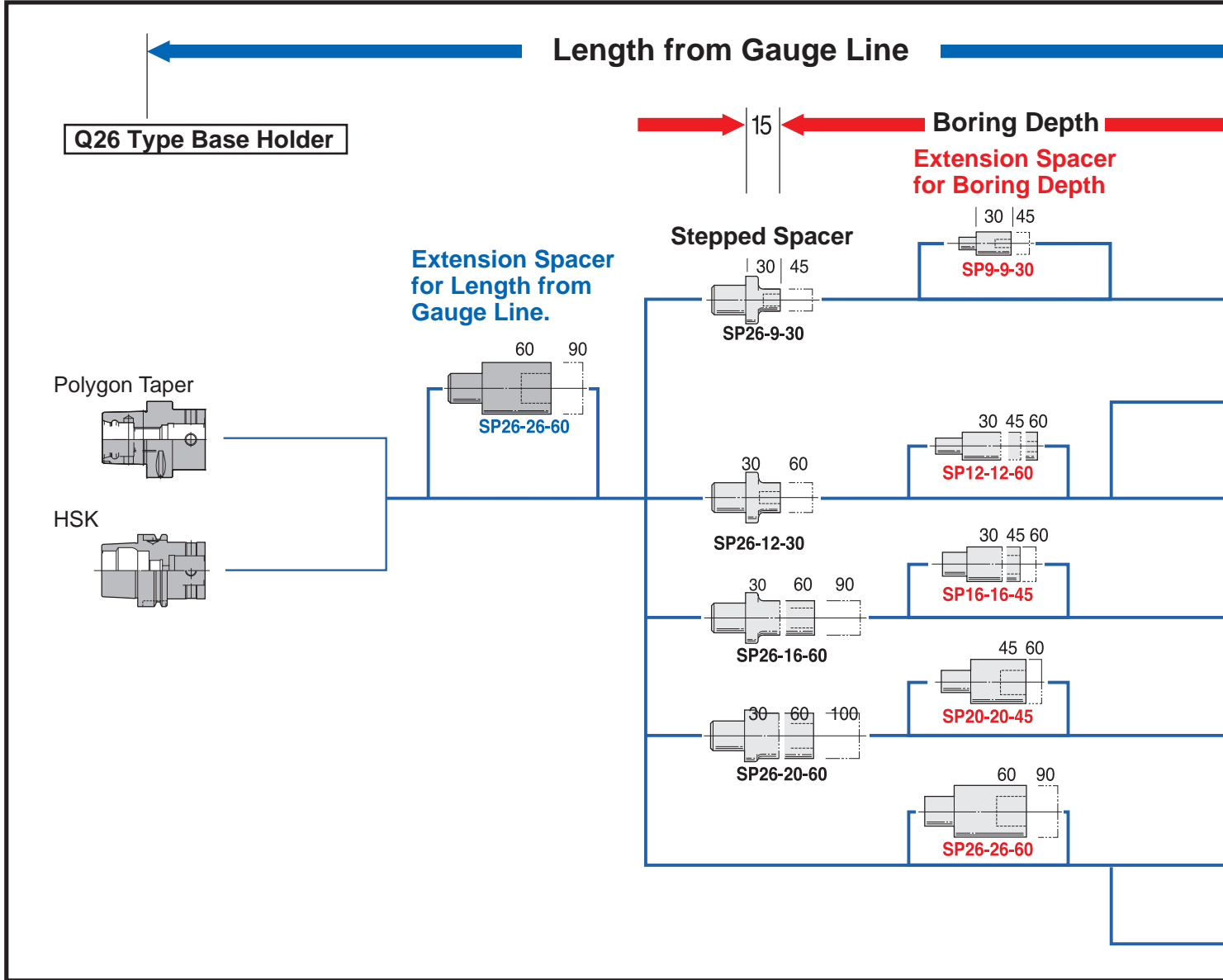
MODULAR TYPE BORING BAR

BASE-HOLDER

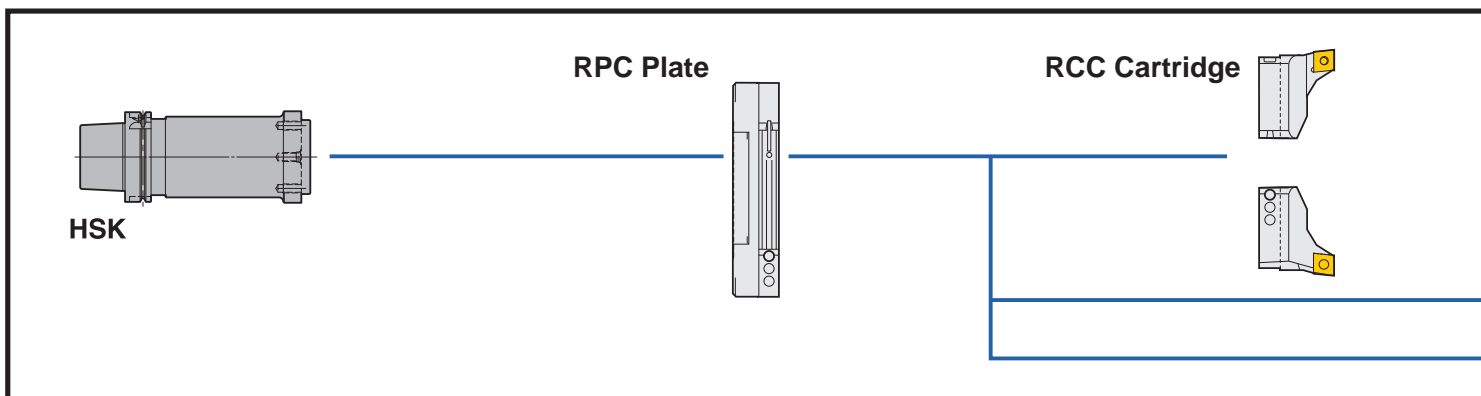
Q26 type base holder can be used for various combinations.
Ideal for low volume production on manual machine with wide variety of boring sizes.

Spacer & Head

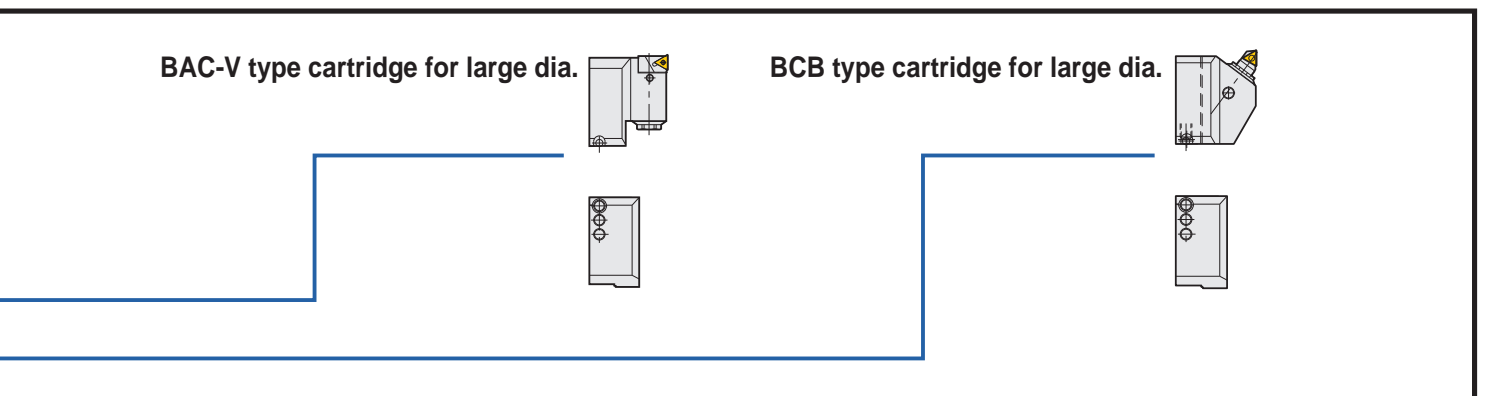
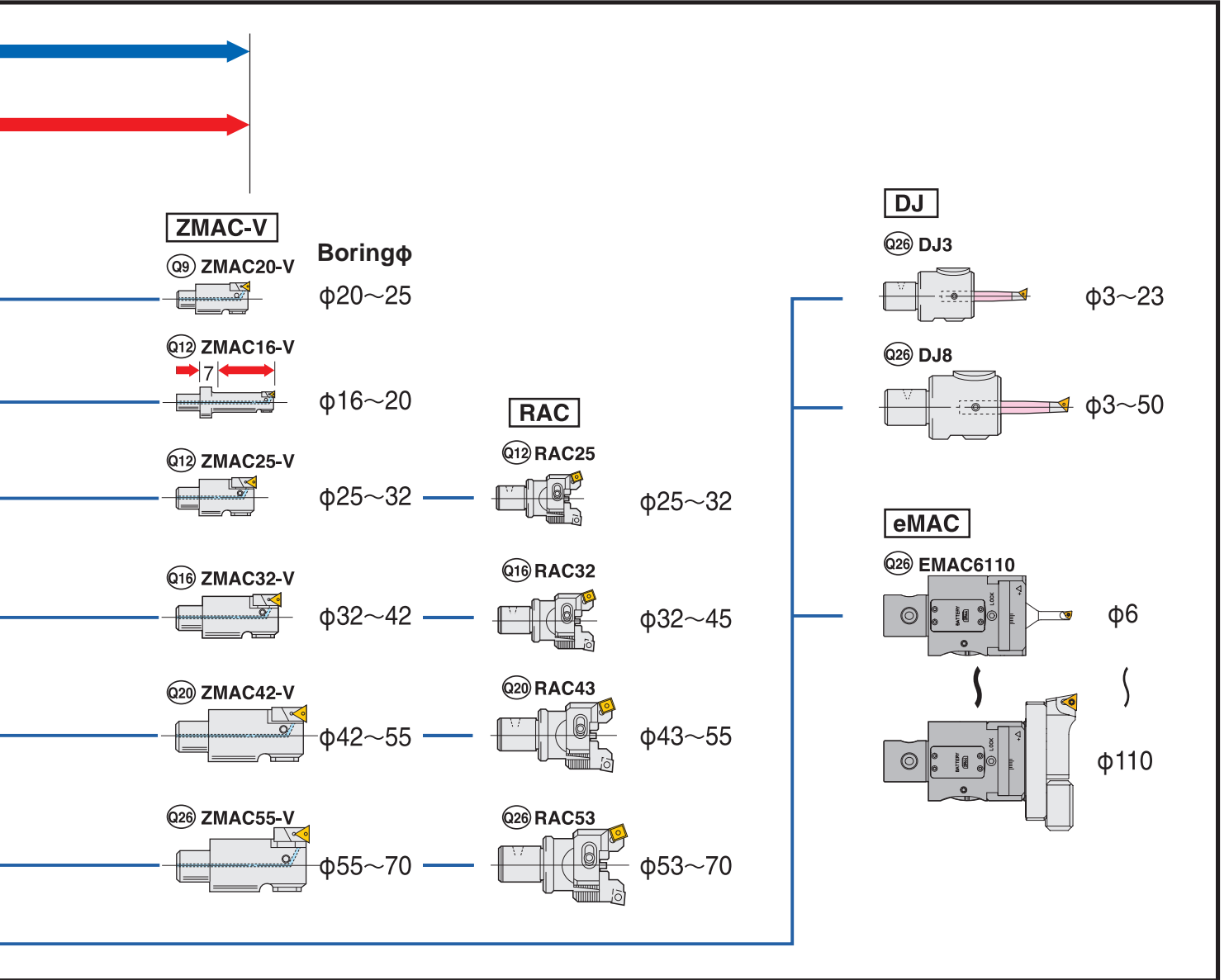
The extensive range of heads & spacers allow the correct selection to suit your boring applications.



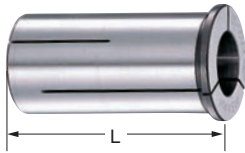
BORING ARBOR FOR LARGE DIA



Method of Selection for Modular ZMAC-V Boring Arbors
 Firstly, select a head, spacer and stepped spacer from boring diameter and depth.
 Then select base holder and SP26 extension spacer by the length from gauge line.

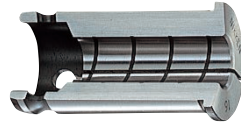


STRAIGHT COLLET for MILLING CHUCK (KM COLLET) **NIKKEN**



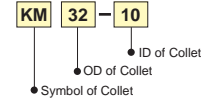
KM

Photo shows ANNIVERSARY type KM Collet.



○ means with internal grooves for gripping strongly to eliminate the oil.

Explanation of the Code No.

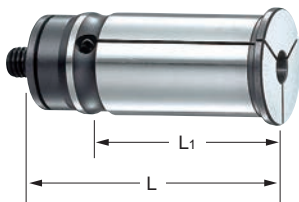


KM : Standard
NK : Adjustable
CCK : Centre Coolant
CCNK : Centre Coolant, Adjustable

Style	L	KM Collet Code No. (OD-ID)
KM12	40	KM12-2, 3, 4, 5, 6, 7, 8, 9, 10
KM16	47.5	KM16-2, 3, 4, 5, 6, 7, 8, 9, 10, 11, 12
KM20	53	KM20-2, 3, 4, 5, 6, 7, 8, 9, 10, 11, 12, 13, 14, 15, 16
KM22	57	KM22-3, 4, 5, 6, 7, 8, 9, 10, 11, 12, 13, 14, 15, 16, 17, 18, 19, 20
KM25	59	KM25-3, 4, 5, 6, 7, 8, 9, 10, 11, 12, 13, 14, 15, 16, 17, 18, 19, 20, 21, 22
KM32	64.5	KM32-3, 4, 5, 6, 7, 8, 9, 10, 11, 12, 13, 14, 15, 16, 17, 18, 19, 20, 21, 22, 23, 24, 25, 26, 30
KM42	73(78)	KM42-3, 4, 5, 6, 7, 8, 9, 10, 11, 12, 13, 14, 15, 16, 17, 18, 19, 20, 21, 22, 23, 24, 25, 26, 27, 28, 29, 30, 31, 32, 40

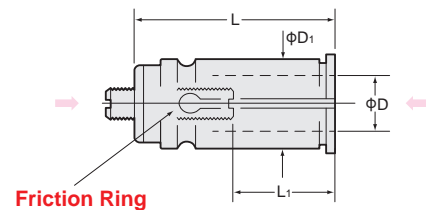
- ★ **[For Synchronous Tapping Program]** : Special ID Collets for Tap Shank are also available.
- ★ Other metric sizes and imperial sizes, 1/8, 1/4, 5/16, 3/8, 7/16, 1/2, 5/8, 3/4, 13/16, 7/8, 1, 1-1/8, 1-1/4, 1-1/2" are also available.
- ★ The collets with bold character are the "ANNIVERSARY" type KM Collet.
- Ordinary KM Collet can be used with "ANNIVERSARY" type Milling Chuck, but better performance can be found with the "ANNIVERSARY" type KM Collet.
- ★ Please note the acceptable shank tolerance is h₆~h₇.
- ★ (): L dimension for **KM42-12** or larger ID.
- ★ Collet removal (**9CKR**) is an optional accessory for NC milling chuck.

STRAIGHT COLLET for MILLING CHUCK (NK COLLET) **NIKKEN**



NK

Cutter length adjustment on the collet is possible from front and back.

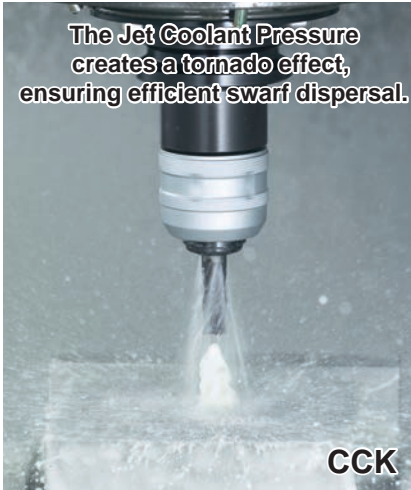


○ means with internal grooves for gripping strongly to eliminate the oil.

Style	L	L ₁	NK Collet Code No. (OD-ID)
NK20	63	20~40	NK20-3, 4, 5, 6, 7, 8, 9, 10, 11, 12, 13, 14, 15, 16
NK22	70	30~50	NK22-3, 4, 5, 6, 7, 8, 9, 10, 11, 12, 13, 14, 15, 16, 17, 18
NK25	68	30~55	NK25-3, 4, 5, 6, 7, 8, 9, 10, 11, 12, 13, 14, 15, 16, 17, 18, 19, 20, 21, 22
NK32	75	30~60	NK32-3, 4, 5, 6, 7, 8, 9, 10, 11, 12, 13, 14, 15, 16, 17, 18, 19, 20, 21, 22, 23, 24, 25, 26
NK42	85(92)	30~65	NK42-3, 4, 5, 6, 7, 8, 9, 10, 11, 12, 13, 14, 15, 16, 17, 18, 19, 20, 21, 22, 23, 24, 25, 26, 27, 28, 29, 30, 31, 32

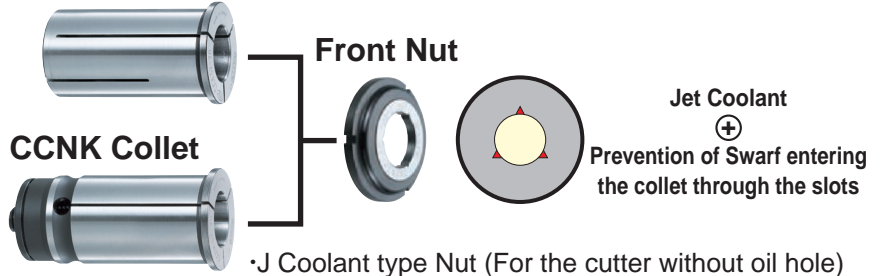
- ★ **[For Synchronous Tapping Program]** : Special ID Collets for Tap Shank are also available.
- ★ Other metric sizes and imperial sizes, 1/8, 1/4, 5/16, 3/8, 7/16, 1/2, 5/8, 3/4, 13/16, 7/8, 1, 1-1/8, 1-1/4, 1-1/2" are also available.
- ★ The collets with bold character are standard.
- ★ Please note the acceptable shank tolerance is h₆~h₇.
- ★ (): L dimension for **NK42-12** or larger ID.
- ★ Collet removal (**9CKR**) is an optional accessory for NC milling chuck.

CENTER COOLANT STRAIGHT COLLET for MILLING CHUCK **NIKKEN**

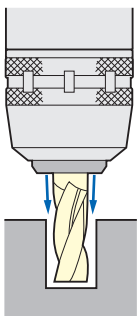


Suitable for all models of the NIKKEN MILLING CHUCK

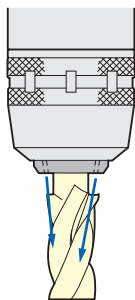
CCK Collet



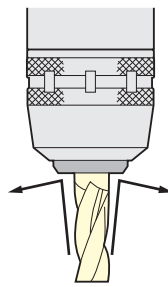
- J Coolant type Nut (For the cutter without oil hole)
- Nut with O-ring (For the oil hole cutter)
- Nut with multi coolant nozzles (For the cutter that the cutter dia. is larger than the shank dia.)



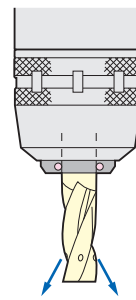
For grooving.



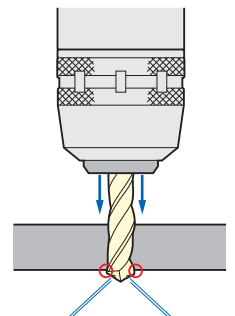
For cutters with cutting diameter which is larger than the shank diameter.



Prevention of the swarf contamination.



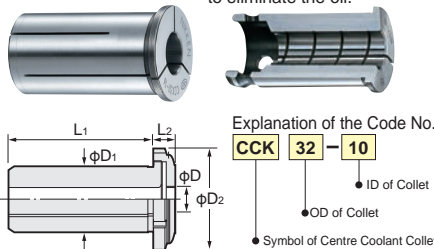
A front nut with an O-ring seal, for use with oil hole cutter, is also available as option.



Supply coolant to the shoulder when oil hole drill is passes through the hole.

CCK Collet

○ means with internal grooves for gripping strongly to eliminate the oil.



It can be used for the standard collet.

Style	φD ₁	φD ₂	L ₁	L ₂	CCK Collet Code No. (OD-ID)	Front Nut Code No.
CCK12	12	19.5	38	7	CCK12-3, 4, 5, 6, 8, 10	CKFN12
CCK16	16	28.5	45	8	CCK16-3, 4, 5, 6, 8, 10, 12	CKFN16
CCK20	20	33	50.5	8	CCK20-6, 8, 10, 12, 16	CKFN20
CCK25	25	39	56	8.5	CCK25-6, 8, 10, 12, 16, 20	CKFN25
CCK32	32	46.5, 43	61.5	9	CCK32-6, 8, 10, 12, 16, 20, 25	CKFN32, CKFN32T
CCK42	42	59.5	70(75)	9	CCK42-6, 8, 10, 12, 16, 20, 25, 32	CKFN42

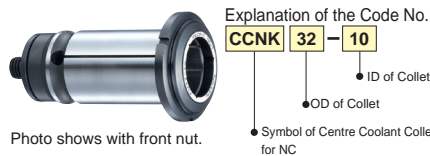
- ★ Above bold figures indicate "ANNIVERSARY" type **CCK** Collet.
- ★ Please note the acceptable shank tolerance is h₆~h₇.
- ★ Other metric sizes and imperial sizes, 1/8, 1/4, 5/16, 3/8, 7/16, 1/2, 5/8, 3/4, 13/16, 7/8, 1, 1-1/8, 1-1/4, 1-1/2" are also available.
- ★ **CKFN** front nut and **CCKL** spanner are optional accessories.
- ★ Collet removal (**9CKR**) is an optional accessory for NC milling chuck.



CCNK Collet

○ means with internal grooves for gripping strongly to eliminate the oil.

Cutter length adjustment on the collet is possible from front and back.



It can be used for the standard collet.

Style	CCNK Collet Code No.(OD-ID)	Front Nut Code No.
CCNK20	CCNK20-6, 8, 10, 12, 16	CKFN20
CCNK25	CCNK25-6, 8, 10, 12, 16, 20	CKFN25
CCNK32	CCNK32-6, 8, 10, 12, 16, 20, 25	CKFN32, CKFN32T
CCNK42	CCNK42-6, 8, 10, 12, 16, 20, 25, 32	CKFN42

- ★ Please note the acceptable shank tolerance is h₆~h₇.
- ★ Other metric sizes and imperial sizes, 1/8, 1/4, 5/16, 3/8, 7/16, 1/2, 5/8, 3/4, 13/16, 7/8, 1, 1-1/8, 1-1/4, 1-1/2" are also available.
- ★ **CKFN** front nut and **CCKL** spanner are optional accessories.
- ★ Collet removal (**9CKR**) is an optional accessory for NC milling chuck.



★ Jet Coolant type for the cutter with a cutter dia. larger than shank dia. is also available.



CKFN25-20MN
32-25MN
42-32MN

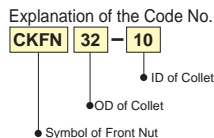
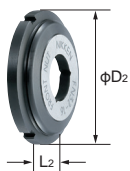
★ Front Nut fitted with an O-ring is also available.
e.g. The Code No. is **CKFN32-10C**



★ The front nut for direct chucking is also available.
e.g. **CKFN20-20D**, **CKFN25-25D**, **CKFN32-32D**

★ The Code No. fitted with O-ring is ;
e.g. **CKFN20-20DC**, **CKFN25-25DC**, **CKFN32-32DC**

Front Nut

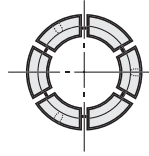
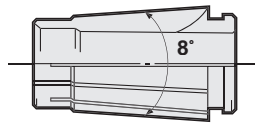


Style	φD ₂	L ₂	Front Nut Code No.
CKFN12	19.5	7	CKFN12 -3, 4, 5, 6, 8, 10
CKFN16	28.5	8	CKFN16 -3, 4, 5, 6, 8, 10, 12
CKFN20	33	8	CKFN20 -6, 8, 10, 12, 16
CKFN25	39	8.5	CKFN25 -6, 8, 10, 12, 16, 20
CKFN32	46.5	9	CKFN32 -6, 8, 10, 12, 16, 20, 25
CKFN32T	43	9	CKFN32T-6, 8, 10, 12, 16, 20, 25
CKFN42	59.5	9	CKFN42 -6, 8, 10, 12, 16, 20, 25, 32

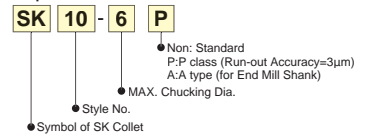
- ★ For C32 there are 2 sizes, **CKFN32** = for nose ring diameter of φ69mm, **CKFN32T** = for nose ring diameter of φ64mm.
- ★ The spanner is available as an option.

CKFN12 : CCKL12, CKFN16 : CCKL16, CKFN20 : CCKL20, CKFN25, CKFN32T : CCKL25, CKFN32 : CCKL32, CKFN42 : CCKL42

SLIM CHUCK COLLET (SK COLLET)



Explanation of the Code No.



SK "A" type SK collet (for End Mill Shank) are marked **P**. The acceptable shank tolerance is h8. Code No. is e.g. SK10-10A
 "P" class SK collet (for drill) are available for all series. e.g. SK10-10P

Code No.	Chucking D
SK 6- 0.8	0.7 ~ 0.8
- 1	0.9 ~ 1.0
- 1.25	1.15~ 1.25
- 1.5	1.3 ~ 1.5
- 1.75	1.55~ 1.75
- 2	1.8 ~ 2.0
- 2.25	2.05~ 2.25
- 2.5	2.3 ~ 2.5
- 2.75	2.55~ 2.75
- 3	2.8 ~ 3.0
- 3.5	3.0 ~ 3.5
- 4	3.5 ~ 4.0
- 4.5	4.0 ~ 4.5
- 5	4.5 ~ 5.0
- 5.5	5.0 ~ 5.5
- 6	5.5 ~ 6.0
SK10- 2	1.75~ 2.0
- 2.25	2.0 ~ 2.25
- 2.5	2.25~ 2.5
- 2.75	2.5 ~ 2.75
- 3	2.75~ 3.0
- 3.5	3.0 ~ 3.5
- 4	3.5 ~ 4.0
- 4.5	4.0 ~ 4.5
- 5	4.5 ~ 5.0
- 5.5	5.0 ~ 5.5
- 6	5.5 ~ 6.0
- 6.5	6.0 ~ 6.5
- 7	6.5 ~ 7.0
- 7.5	7.0 ~ 7.5
- 8	7.5 ~ 8.0
- 8.5	8.0 ~ 8.5
- 9	8.5 ~ 9.0
- 9.5	9.0 ~ 9.5
-10	9.5 ~10.0

Code No.	Chucking D
SK13- 3	2.75~ 3.0
- 3.5	3.0 ~ 3.5
- 4	3.5 ~ 4.0
- 4.5	4.0 ~ 4.5
- 5	4.5 ~ 5.0
- 5.5	5.0 ~ 5.5
- 6	5.5 ~ 6.0
- 6.5	6.0 ~ 6.5
- 7	6.5 ~ 7.0
- 7.5	7.0 ~ 7.5
- 8	7.5 ~ 8.0
- 8.5	8.0 ~ 8.5
- 9	8.5 ~ 9.0
- 9.5	9.0 ~ 9.5
- 10	9.5 ~10.0
- 10.5	10.0~10.5
- 11	10.5~11.0
- 11.5	11.0~11.5
- 12	11.5~12.0
- 12.5	12.0~12.5
- 13	12.5~13.0

Code No.	Chucking D
SK16- 3	2.75~ 3.0
- 3.5	3.0 ~ 3.5
- 4	3.5 ~ 4.0
- 4.5	4.0 ~ 4.5
- 5	4.5 ~ 5.0
- 5.5	5.0 ~ 5.5
- 6	5.5 ~ 6.0
- 6.5	6.0 ~ 6.5
- 7	6.5 ~ 7.0
- 7.5	7.0 ~ 7.5
- 8	7.5 ~ 8.0
- 8.5	8.0 ~ 8.5
- 9	8.5 ~ 9.0
- 9.5	9.0 ~ 9.5
- 10	9.5 ~10.0
- 10.5	10.0~10.5
- 11	10.5~11.0
- 11.5	11.0~11.5
- 12	11.5~12.0
- 12.5	12.0~12.5
- 13	12.5~13.0
- 13.5	13.0~13.5
- 14	13.5~14.0
- 14.5	14.0~14.5
- 15	14.5~15.0
- 15.5	15.0~15.5
- 16	15.5~16.0

Code No.	Chucking D
SK20- 4	3.5 ~ 4.0
- 4.5	4.0 ~ 4.5
- 5	4.5 ~ 5.0
- 5.5	5.0 ~ 5.5
- 6	5.5 ~ 6.0
- 6.5	6.0 ~ 6.5
- 7	6.5 ~ 7.0
- 7.5	7.0 ~ 7.5
- 8	7.5 ~ 8.0
- 8.5	8.0 ~ 8.5
- 9	8.5 ~ 9.0
- 9.5	9.0 ~ 9.5
- 10	9.5 ~ 10.0
- 10.5	10.0~ 10.5
- 11	10.5~ 11.0
- 11.5	11.0~ 11.5
- 12	11.5~ 12.0
- 12.5	12.0~ 12.5
- 13	12.5~ 13.0
- 13.5	13.0~ 13.5
- 14	13.5~ 14.0
- 14.5	14.0~ 14.5
- 15	14.5~ 15.0
- 15.5	15.0~ 15.5
- 16	15.5~ 16.0
- 16.5	16.0~ 16.5
- 17	16.5~ 17.0
- 17.5	17.0~ 17.5
- 18	17.5~ 18.0
- 18.5	18.0~ 18.5
- 19	18.5~ 19.0
- 19.5	19.0~ 19.5
- 20	19.5~ 20.0

Code No.	Chucking D
SK25- 8	7.5~8.0
- 10	9.5~10.0
- 12	11.5~12.0
- 16	15.5~16.0
- 16.5	16.0~16.5
- 17	16.5~17.0
- 17.5	17.0~17.5
- 18	17.5~18.0
- 18.5	18.0~18.5
- 19	18.5~19.0
- 19.5	19.0~19.5
- 20	19.5~20.0
- 20.5	20.0~20.5
- 21	20.5~21.0
- 21.5	21.0~21.5
- 22	21.5~22.0
- 22.5	22.0~22.5
- 23	22.5~23.0
- 23.5	23.0~23.5
- 24	23.5~24.0
- 24.5	24.0~24.5
- 25	24.5~25.0
- 25.4	25.0~25.4

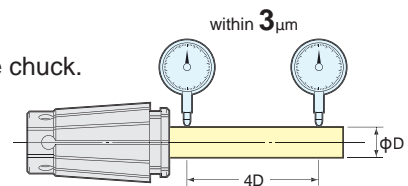
★SK6 collet with the special internal dia. is also available.



Collet removal (SKR-6) is supplied as standard only for SK6. SKR-10, SKR-16 and SKR-25 are available as an option. Collet removal is not necessary for the new types of collet (SK10 to SK25 collet including SK13 and SK20).

“P” class SK collet for drill

It guarantees the Run-out accuracy within 3 micron at the nose (4D) from the chuck. Additionally Collet Set is also available.



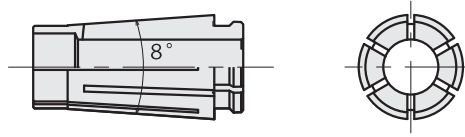
“A” type SK collet for endmill

The acceptable shank tolerance is h8.

SK Collet A Type
SK 6-3A, 4A, 5A, 6A
SK10-3A, 4A, 5A, 6A, 8A, 10A
SK13-3A, 4A, 5A, 6A, 8A, 10A, 12A, 13A
SK16-3A, 4A, 5A, 6A, 8A, 10A, 12A, 16A
SK20-4A, 5A, 6A, 8A, 10A, 12A, 16A, 20A
SK25-8A, 10A, 12A, 16A, 20A, 25A

SK Collet A Type (Inch)
SK 6 -1/8A, 3/16A
SK10 -1/8A, 3/16A, 1/4A, 5/16A, 3/8A
SK13 -1/8A, 3/16A, 1/4A, 5/16A, 3/8A, 7/16A, 1/2A
SK16 -1/8A, 3/16A, 1/4A, 5/16A, 3/8A, 7/16A, 1/2A, 9/16A, 5/8A
SK20 -1/8A, 3/16A, 1/4A, 5/16A, 3/8A, 7/16A, 1/2A, 9/16A, 5/8A, 3/4A
SK25 -3/16A, 1/4A, 5/16A, 3/8A, 7/16A, 1/2A, 5/8A, 3/4A, 25.4A

CENTER-THRU COOLANT COLLET (SK-AC) for NIKKEN SLIM CHUCK



Code number reference

SK	10	-	6	AC
----	----	---	---	----

- Slim Chuck
- Style
- Max clamping diameter
- Center-thru coolant

SK-AC

Style	Code No.	Chucking D
SK 6	SK 6- 3AC	3.0
	- 4AC	4.0
	- 5AC	5.0
	- 6AC	6.0
SK10	SK10- 3AC	3.0
	- 4AC	4.0
	- 5AC	5.0
	- 6AC	6.0
	- 7AC	7.0
	- 8AC	8.0
	- 9AC	9.0
	-10AC	10.0
SK13	SK13- 4AC	4.0
	- 5AC	5.0
	- 6AC	6.0
	- 7AC	7.0
	- 8AC	8.0
	- 9AC	9.0
	-10AC	10.0
	-12AC	12.0
SK16	SK16- 6AC	6.0
	- 7AC	7.0
	- 8AC	8.0
	- 9AC	9.0
	-10AC	10.0
	-11AC	11.0
	-12AC	12.0
	-16AC	16.0
SK20	SK20-12AC	12.0
	-16AC	16.0
	-20AC	20.0
SK25	SK25-16AC	16.0
	-20AC	20.0
	-25AC	25.0

★Clamping range: h8

Quick & Easy to block coolant diffusion

Slim Chuck
Major Dream Holder



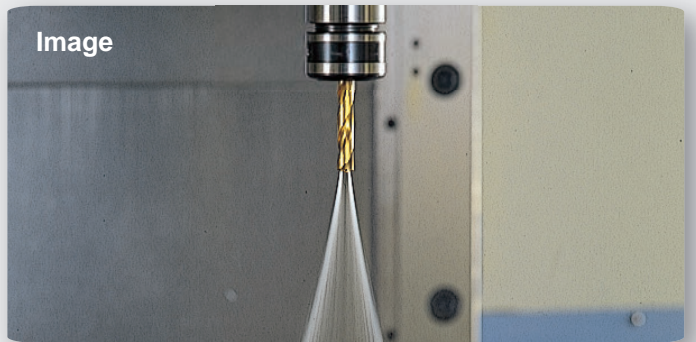
SK standard nut
SKT/MDSK standard nut



New SK coolant collet



Image



J-NUT & J-CAP are also available.



J-CAP
with 3 coolant slots



J-NUT

TiN BEARING NUT for SLIM CHUCK

NIKKEN

Nut of SK-P for GH handle and Nut of SKT/MDSK are same for SK10, SK13 and SK20.

Nut of SK-P for GH handle and Nut of SKT/MDSK are different for SK6, SK16 and SK25.

SK standard Nut (for C-Spanner)

standard	Style	TiN Bearing Nut	J type TiN Bearing Nut	C- Spanner
	SK 6(φ19.5)	SKN- 6WK*	SKN- 6WKJ*	SKL- 6W
(Cap is option)	SK10	-10K *	-10KJ *	-10
	SK13	-13B	-13BJ	9HC12A
	SK16	-16B	-16BJ	9HC16
	SK20	-20B	-20BJ	9HC22
	SK25	-25B	-25BJ	

SK-P Nut for High Speed (for GH Handle)

standard	Style	TiN Bearing Nut	J type TiN Bearing Nut	GH Handle
	SK 6(φ19.5)	SKN- 6WK(GH)*	SKN- 6WKJ(GH)*	GH 6
(Cap is option)	SK10	-10K(GH) *	-10KJ(GH) *	GH10
	SK13	MDSKN-13B	MDSKN-13BJ	GH12
	SK16	SKN-16B(GH)	SKN-16BJ(GH)	GH16
	SK20	MDSKN-20B	MDSKN-20BJ	GH20
	SK25	SKN-25B(GH)	SKN-25BJ(GH)	GH25

SKT/MDSK Nut (for C-Spanner)

standard	Style	TiN Bearing Nut	J type TiN Bearing Nut	C- Spanner
	SKT 6 / MDSK 6	SKTN- 6K*	SKTN- 6KJ*	SKL- 6W
(Cap is option)	SKT10 / MDSK10	SKN -10K*	SKN -10KJ*	-10
	SKT13 / MDSK13	-13B	-13BJ	9HC12A
	SKT16 / MDSK16	SKTN-16B	SKTN-16BJ	9HC16
	SKT20 / MDSK20	SKN -20B	SKN -20BJ	9HC22
	SKT25 / MDSK25	SKTN-25B	SKTN-25BJ	

SKT/MDSK Nut (for GH Handle)

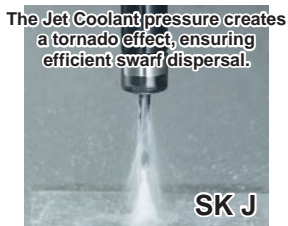
standard	Style	TiN Bearing Nut	J type TiN Bearing Nut	GH Handle
	SKT 6 / MDSK 6	MDSKN- 6K *	MDSKN- 6KJ *	GH 6
(Cap is option)	SKT10 / MDSK10	SKN-10K(GH)*	SKN-10KJ(GH)*	GH10
	SKT13 / MDSK13	MDSKN-13B	MDSKN-13BJ	GH12
	SKT16 / MDSK16	-16B	-16BJ	GH16
	SKT20 / MDSK20	-20B	-20BJ	GH20
	SKT25 / MDSK25	-25B	-25BJ	GH25

* NEW Shining Edition.

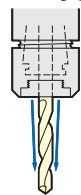
To keep run-out accuracy high, you are recommended to change nuts periodically when slim chuck is used very frequently.

J TYPE NUT for SLIM CHUCK

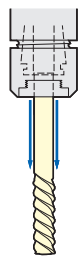
NIKKEN



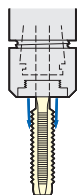
J type Nut



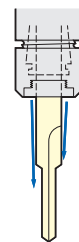
For standard drill.



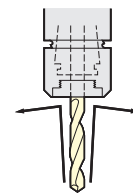
For reamer.



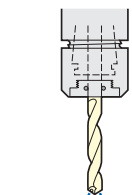
For tap.



For special cutter.

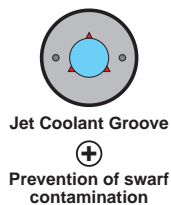
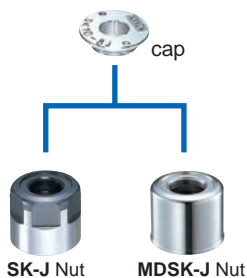


For prevention of swarf and dust contamination.



The cap with O-ring seal for using of oil hole drill is also available.

J type nut and cap fit all existing Slim Chuck.



Style	J type Nut Code No.		Cap Code No.	Wrench Code No.
	SK	SKT/MDSK		
SK 6(φ18)	SKN- 6J*	-	SKJ 6-3, 3.3, 4, 4.2, 5, 6	SKJL- 6
SK 6(φ19.5)	SKN- 6WBJ	MDSKN- 6BJ		
SK10	SKN-10BJ	SKN-10BJ(GH)	SKJ10-3, 4, 5, 5.5, 6, 6.2, 6.8, 7, 8, 8.5, 10	SKJL-10
SK13	SKN-13BJ	MDSKN-13BJ		
SK16	SKN-16BJ	MDSKN-16BJ	SKJ16-7, 8, 8.5, 10, 10.3, 12, 12.5, 14, 15, 16	SKJL-16
SK20	SKN-20BJ	MDSKN-20BJ		
SK25	SKN-25BJ	MDSKN-25BJ	SKJ25-8, 10, 12, 16, 17.5, 20, 25	SKJL-25

★When SK J type nut is used, the total chuck length will be extended to 6mm.

★SKN-6J made * is not TiN Bearing Nut.

★The contamination of the swarf and the rust can be prevented even without coolant through application.

★The different ID hole is available as an option. Please contact us.

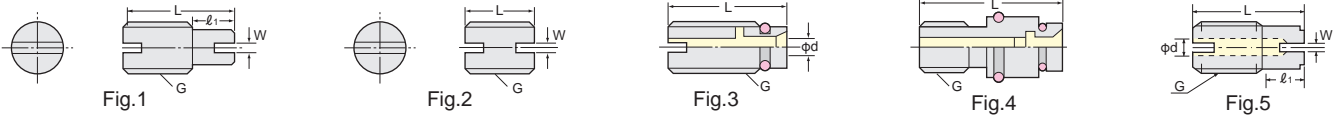
★The cap with O-ring at ID for oil hole drill is also available. e.g. SKJ10-4C

★When the ID hole will be machined at your side to buy a cap without hole, the centering of the cap is important. Please contact us.

ADJUST SCREW for SLIM CHUCK



The adjust Screw for the High Speed Slim Chuck "GSK-P type" is identical to the Standard Slim Chuck as below.
e.g. The adjust Screw for BT30-GSK10-45P is SKG-12S, is the same as the screw for BT30-SK10-45.



Please remove standard Adjust Screw or use the Adjust Screw specially designed to J type Nut for the stopper.

SK

Explanation of the Code No. of the Adjust screw for Standard Slim Chuck

e.g. **SKG** - **12** **L** - **J**

- None, -J : Symbol of adjust screw used with J type nut (Fig.5)
- None, S, L : Length indication
- 8, 12, 18, 28 : Screw size
- Symbol of adjust screw

Explanation of the Code No. of the Adjust screw with centre hole for Standard Slim Chuck

e.g. **SKG** - **12** **H** **A**

- None, A : Centre hole indication
- H : With centre hole
- 12, 18, 28 : Screw size
- Symbol of adjust screw

Style	Adjust Screw Code No.	Fig.	Slim Chuck Code No.
SK 6	SKG- 8	1	All SK6 Slim Chucks
SK10	SKG-12L	1	All SK10 Slim Chucks except below
	SKG-12S	2	BT30-SK10-45, HSK50A-SK10-90, HSK63F-SK10-90
SK13	SKG-15	1	All SK13 Slim Chucks
SK16	SKG-18L	1	All SK16 Slim Chucks except below
	SKG-12	2	BT30-SK16-90
	SKG-12L	1	BT30-SK16-60
	SKG-18S	2	BT40-SK16-60
SK20	SKG-22	1	All SK20 Slim Chucks except below
	SKG-12	2	BT30-SK20-90
	SKG-12L	1	BT30-SK20-75
	SKG-12S	2	BT30-SK20-60
SK25	SKG-28	1	All SK25 Slim Chucks except below
	SKG-12	2	BT30-SK25-90, BT40-SK25-75
	SKG-12MF	2	NC5-46-SK25-90

Style	Screw Size	Adjust Screw Code No.	Fig.	Hole Dia.	Cutter Shank Dia.	Wrench width
SK10	M12	SKG-12H	3	φ4	φ6~	3
		SKG-12HA		φ2.5	φ4~	2
SK13	M15 P1.0	SKG-15H	3	φ4	φ6~	3
		SKG-15HA		φ2.5	φ4~	2
SK16	M12	SKG-12H	3	φ4	φ6~	3
		SKG-12HA		φ2.5	φ4~	2
	SKG-18H	φ7.2		φ10~	6	
	SKG-18HA	φ3.5		φ5~	3	
SK20	M12	SKG-12H	3	φ4	φ6~	3
		SKG-12HA		φ2.5	φ4~	2
SK20	M22 P1.5	SKG-22H	3	φ8	φ10~	5
		SKG-22HA		φ4	φ6~	3
SK25	M12	SKG-12H	3	φ4	φ6~	3
		SKG-12HA		φ2.5	φ4~	2
SK25	M28 P2.0	SKG-28H	3	φ12	φ16~	8
		SKG-28HA		φ2.5	φ4~	2

★The adjust screw for oil hole tap is also available. Please contact with us.
★These adjust screws are for the coolant pressure up to 1MPa.

★W=2mm is standard. W=2.4, 3, 4, 5, 6, 8, 12mm are also available. e.g. SKG-12L-W2.4
Please choose suitable one for the tang width of your drill.

SK-C

There is no leakage of coolant from screw, because OD of the straight portion of the adjust screw is sealed.

Explanation of the Code No. of the Adjust screw for High Pressure Coolant Slim Chuck

e.g. **SKG** **10** - **10** **HG** **B** - **J**

- None, -J : Symbol of adjust screw used with J type nut (Fig.5)
- None, A, B, ... : Specification (Length, for small drill, for Tap...)
- Symbol of high pressure coolant
- 6, 10, 12, 18, 24 : Screw size
- 6, 10, 16, 25 : Slim chuck style
- Symbol of adjust screw

3LOCK tool (MBT, MIT and MCAT) , 2LOCK tool (NBT, NIT and NCAT) , NC5 tool and HSK tool can be used at high pressure centre through tool coolant application (MAX.7MPa) .

Please change the shank No. from BT to MBT or NBT for 3LOCK tool or 2LOCK tool.

The adjust screw for BT40-SK16F-90 is same as the adjust screw for MBT40-SK16F-90 and NBT40-SK16F-90.

Please refer adjust screw for oil hole holder.

SKO P.113, MOK P.111

Style	Adjust Screw Code No.	Fig.	Hole Dia.	Cutter Shank Dia.	Slim Chuck Code No.	Wrench width
SK 6	SKG 6- 6HG	1	φ2.5	φ4~	All SK6C/SK6F Slim Chucks	2
SK10	SKG10-10HG		φ4	φ6~	All SK10C/SK10F Slim Chucks	4
	SK10	SKG10-10HGA	φ2.5	φ4~		2
SK13	SKG13-10HG	1	φ4	φ6~	All SK13C/SK13F Slim Chucks	4
	SKG13-10HGA		φ2.5	φ4~		2
SK16	SKG16-12HG	1	φ7.2	φ10~	All SK16C/SK16F Slim Chucks except below	6
	SKG16-12HGB				BT40-SK16F-90	
	SKG16-10HG				HSK40A-SK16C-120, HSK50A-SK16C-120	
	SKG16-10HGA				HSK63A-SK16C-120, 150, HSK100A-SK16C-120	
SK16	SKG16-12HGE	1	φ3.5	φ5~	All SK16C/SK16F Slim Chucks except below	3
	SKG16-12HGA				BT40-SK16F-90	
	SKG16-12HGBA				HSK40A-SK16C-120, HSK50A-SK16C-120	
	SKG16-10HGA				HSK63A-SK16C-120, 150, HSK100A-SK16C-120	
SK20	SKG20-18HG	1	φ6.8	φ10~	All SK20C/SK20F Slim Chucks except below	5
	SKG20-12MFHG				NC5-46-SK20C-90, NC5-53-SK20C-90, HSK63A-SK20C-120,-135	
	SKG20-12HG				NC5-46-SK20C-120, NC5-53-SK20C-120, NBT30-SK20C-90	
	SKG20-12HGE				HSK100A-SK20C-150, -200	
	SKG20-16HG				NBT30-SK20C-75	
	SKG20-18HGB				NBT40-SK20C-60	
SK20	SKG20-18HGB	1	φ6.8	φ10~	All SK20C/SK20F Slim Chucks except below	5
	SKG20-12HG				BT40-SK20F-90	
	SKG20-12HGE					
	SKG20-16HG					
	SKG20-18HGB					
SK25	SKG25-24HG	1	φ12	φ16~	All SK25C/SK25F Slim Chucks except below	8
	SKG25-24HGA				BT40-SK25F-120, BT50-SK25F-105	
	SKG25-18HGC				BT40-SK25F-90	
	SKG25-18HGD				BT40-SK25C-90, NC5-63-SK25C-135	
	SKG25-18HGE				NC5-85-SK25C-135, NBT40-SK25C-90	
SKG25-18HGE	SKG25-18HGE		HSK63A-SK25C-135, HSK100A-SK25C-145, NBT40-SK25C-75			

★The adjust screw for oil hole tap is different from standard. The front end of the adjust screw is flat, not taper. Please add "S" at the end of Code No. e.g. SKG10-10HGAS, SKG16-12HGBAS, SKG16-12HGBAS

★The adjust screw for extra small cutter shank dia. (φ3) is available. Please contact with us.

★The steel made adjust screw for SK10 or SK16 is available.

Please add "-FE" at the end of Code No. e.g. SKG10-10HG-FE



SK SCALE WRENCH for NIKKEN SLIM CHUCK

NEW

NIKKEN



Hexagon

Flathead screwdriver



Code No.	Corresponding Slim Chuck	Hexagon size
SKWR-2- 95L	Available for standard center-thru, high pressure center thru	2
-3-101L		3
-4-110L		4
-5-120L		5
-6-133L		6
-8-154L		8

Code No.	Corresponding Slim Chuck	Style
SKWR-DR-120L	Standard Slim Chuck	Flathead screwdriver type

SK Scale Wrench for Center-thru adjust screw

Style	Code No.	Adjust screw Code No.	ID	Cutting tool shank dia.
SK10	SKWR-3-101L	SKG-12H	φ4	φ6~
	-2- 95L	-12HA	φ2.5	φ4~
SK13	SKWR-3-101L	SKG-15H	φ4	φ6~
	-2- 95L	-15HA	φ2.5	φ4~
SK16	SKWR-3-101L	SKG-12H	φ4	φ6~
	-2- 95L	-12HA	φ2.5	φ4~
	-6-133L	-18H	φ7.2	φ10~
	-3-101L	-18HA	φ3.5	φ5~
SK20	SKWR-3-101L	SKG-12H	φ4	φ6~
	-2- 95L	-12HA	φ2.5	φ4~
	-5-120L	-22H	φ8	φ10~
SK25	SKWR-3-101L	SKG-12H	φ4	φ6~
	-2- 95L	-12HA	φ2.5	φ4~
	-8-154L	-28H	φ12	φ16~

SK Scale Wrench for Standard adjust screw

Style	Code No.	Adjust screw Code No.	Corresponding Slim Chuck Code No.
SK 6	SKWR-DR-120L	SKG- 8	ALL SK6
		SKG-12L	ALL SK10 except below
-12S		BT30-SK10-45, HSK50A-SK10-90, HSK63F-SK10-90	
SKG-15		ALL SK13	
SK16		SKG-18L	ALL SK16 except below
		-12	BT30-SK16-90
		-12L	BT30-SK16-60
		-18S	BT40-SK16-60
SK20		SKG-22	ALL SK20 except below
		-12	BT30-SK20-90
	-12L	BT30-SK20-75	
SK25	-12S	BT30-SK20-60	
	SKG-28	ALL SK25 except below	
	-12	BT30-SK25-90, BT40-SK25-75	
		-12MF	NC5-46-SK25-90

SK Scale Wrench for high pressure coolant thru Slim Chuck adjust screw

Style	Code No.	Adjust screw Code No.	ID	Cutting tool shank dia.	Corresponding Slim Chuck Code No.
SK 6	SKWR-2- 95L	SKG 6- 6HG	φ2.5	φ4~	ALL SK 6C/SK 6F
SK10	SKWR-4-110L	SKG10-10HG	φ4	φ6~	ALL SK10C/SK10F
	SKWR-2- 95L	-10HGA	φ2.5	φ4~	
SK13	SKWR-4-110L	SKG13-10HG	φ4	φ6~	ALL SK13C/SK13F
	SKWR-2- 95L	-10HGA	φ2.5	φ4~	
SK16	SKWR-6-133L	SKG16-12HG	φ7.2	φ10~	ALL SK16C/SK16F except below
		-12HGB			BT40-SK16F-90
		-10HG			HSK40A-SK16C-120, HSK50A-SK16C-120, HSK63A-SK16C-120, 150, HSK100A-SK16C-120
		-12HGE			NC5-46-SK16C-90, -120, NBT40-SK16C-60, NBT30-SK16C-75
	SKWR-3-101L	-12HGA	φ3.5	φ5~	ALL SK16C/SK16F except below
		-12HGBA			BT40-SK16F-90
		-10HGA			HSK40A-SK16C-120, HSK50A-SK16C-120, HSK63A-SK16C-120, 150, HSK100A-SK16C-120, NC5-46-SK16C-90, -120, NBT40-SK16C-60, NBT30-SK16C-75
SK20	SKWR-5-120L	SKG20-18HG	φ6.8	φ10~	ALL SK20C/SK20F except below
		-12MFHG			NC5-46-SK20C-90, NC5-53-SK20C-90, HSK63A-SK20C-120, 135
		-12HG			NC5-46-SK20C-120, NC5-53-SK20C-120, NBT30-SK20C-90, HSK100A-SK20C-150, -200
		-12HGE			NBT30-SK20C-75
		-16HG			NBT40-SK20C-60
		-18HGB			BT40-SK20F-90
SK25	SKWR-8-154L	SKG25-24HG	φ12	φ16~	ALL SK25C/SK25F except below
		-24HGA			BT40-SK25F-120, BT50-SK25F-105
		-18HGC			BT40-SK25F-90
		-18HGD			BT40-SK25C-90, NC5-63-SK25C-135, NC5-85-SK25C-135, NBT40-SK25C-90
		-18HGE			HSK63A-SK25C-135, HSK100A-SK25C-145, NBT40-SK25C-75

HANDLE / SPANNER / WRENCH

NIKKEN

Handle for Milling Chuck

Style	Code No.
C12 (C ₁ =φ30mm)	9HC12
C12 (C ₁ =φ33mm)	9HC12A
C16	9HC16
C20	9HC22
C25 (C ₁ =φ55mm)	9HC22
C25 (C ₁ =φ60mm)	9HC25
C32 (C ₁ =φ64mm)	9HC25
C32 (C ₁ =φ69mm)	9HC32
C42	9HC42

Spanner for Slim Chuck

Style	Code No.
SK6 (C=φ18mm)	SKL-6
SK6 (C=φ19.5mm)	SKL-6W
SK10	SKL-10
SK13	9HC12A
SK16	9HC16
SK20	9HC22
SK25	9HC22

Wrench for NPU Drill Chuck

Style	Code No.
NPU 8	NPUL- 8
NPU13	NPUL-13

GH HANDLE for HIGH SPEED TOOLING

NIKKEN



GH Handle has a two-way tightening/loosening ratchet on the handle that has been developed to provide quick and convenient loading of the tool. The GH Handle also dispenses with the need for notches on the nose ring.

PAT.



GH

Code No.	Milling Chuck	Slim Chuck	MAJOR DREAM	VC Holder
GH 6*	—	SK 6-P / SKT 6	MDSK 6	—
GH10*	—	SK10-P / SKT10	MDSK10	VC6
GH12*	C12-G	SK13-P / SKT13	MDSK13	—
GH16*	C16-G	SK16-P / SKT16	MDSK16	VC13
GH20*	C20-G	SK20-P / SKT20	MDSK20	—
GH25*	C25-G	SK25-P / SKT25	MDSK25	—
GH32S	C32-G (Nose Ring: φ62mm)	—	—	—
GH32	C32-G (Nose Ring: φ68mm)	—	—	—

★Torque adjustable GH Handle is available for * marked handle.
The Code No. is GH6-TLS, GH10-TLS, GH16-TLS, GH25-TLS.



Tightening



Loosening

BOTH HAND CLAMPING HANDLE BENKEI

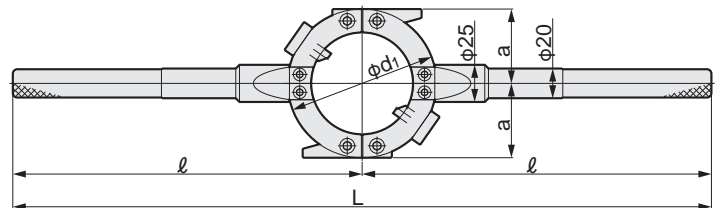
NEW

NIKKEN

Clamping Milling chuck nut to pair with 2 clamping handles
New designed both hand clamping handle "BENKEI"



3 easy steps make it possible to clamp, unclamp milling chuck very safely and easily.



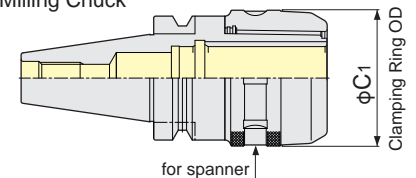
Reference of the code number

9HC32 - TW

● Both hand clamping handle

● Corresponding Milling Chuck
(Ex. "32" is available for C32(φC₁=69mm) milling chuck)

Milling Chuck



Code No.	Dimensions(mm)				Corresponding Milling Chuck
	a	l	L	φd ₁	
9HC32TW	50	235	470	100	C32 (φC ₁ =69mm)
9HC42TW	59	285	570	117	C42 (φC ₁ =86mm)
9HC50TW	69	285	570	138	C50EX (φC ₁ =105mm)

NIKKEN KOSAKUSHO WORKS, LTD. OSAKA, JAPAN.

5-1, 1-chome, Minamishinden, Daito-shi, Osaka-fu, Japan. Telephone : 072-869-5820 Telefax : 072-869-6220

U.S.A CA, CT, IL, NC, TX, WA

LYNDEX-NIKKEN
1468 Armour Boulevard,
Mundelein, ILLINOIS 60060
Tel.+1-847-367-4800 Fax.+1-847-367-4815

MEXICO (From 2014.09)

HERRAMIENTAS LYNDEX-NIKKEN S.A.de C.V.
Av. Hercules #401-13, Fracc. Poligono 3
Santa Rosa Jauregui, Queretaro 76220
Tel.+52-55-8421-8421

FRANCE

PROCOMO-NIKKEN S.A.S
6, avenue du 1er Mai-Z.A.E.Les Glaises 91127
Palaiseau Cedex
Tel.+33-(0)-1-69.19.17.35 Fax.+33-(0)-1-69.30.64.68

UK

NIKKEN KOSAKUSHO EUROPE LTD.
Precision House, Barbot Hall Industrial Estate,
Rotherham, South Yorkshire, S61 4RL
Tel.+44-(0)-1709-366306 Fax.+44-(0)-1709-376683

GERMANY

NIKKEN DEUTSCHLAND GmbH
Eisenstraße 9c, 65428 Rüsselsheim
Tel.+49-(0)-6142-550600 Fax.+49-(0)-6142-550606

ITALY

VEGA INTERNATIONAL TOOLS S.P.A
Via Asti N° 9 10026-Santena(TORINO)
Tel.+39-011-9497911 Fax.+39-011-9456380

SCANDINAVIA SWEDEN

NIKKEN SCANDINAVIA AB
Malmövägen 14 331 42 Värnamo Sweden
Tel.+46-(0)-303-440-600 Fax.+46-(0)-303-58177

SPAIN & PORTUGAL

CUTTING TOOL S.L
Portuetxe 16, Barrio Igarra
E-20018 Donostia-san Sebastian
Tel.+34-(0)-902-820090 Fax.+34-(0)-902-820099
UTILLAJES OLASA,S.L.
Tel.+34-(0)-943-107177

TURKEY

NIKKEN KESICI TAKIMLAR SAN. VE ULUSLARARASI TIC. A. S
E5 Uzeri Kucukyali Yanyol Irmak Sok.
Kucukyali Sanayi Sitesi A Blok No:5 Maltepe 34852 Istanbul
Tel.+90-(0)-216-518-1010 Fax.+90-(0)-216-366-1414

KOREA

KOREA NIKKEN LTD.
90B-11L, Namdong Industrial Complex, 170, Namdong-Daero,
Namdong-Gu, Incheon, Korea 405-819
Tel.+82-(0)-32-763-4461 Fax.+82-(0)-32-763-4464

P.R.CHINA

SHANGHAI ZHONG YAN TRADING CO., LTD.
Building 1/f, #54, No.1089 Qinzhou Rd. (N),
Shanghai, China
Tel.+86-(0)-216210-2506 Fax.+86-(0)-216210-2083

SINGAPORE

NIKKEN KOSAKUSHO ASIA PTE, LTD.
186, Woodlands Industrial Park E5 #04-01
M Singapore 757515
Tel.+65-6362-7980 Fax.+65-6362-7980

THAILAND

SIAM NIKKEN Co., LTD.
127 Moo5 Gauwungsai-Bangturie Road Tambon Tanokkard
Ampher Muangnakhonpathom Nakhonpathom 73000 Thailand
Tel.+66(02)178-0503 Fax.+66(02)178-0504

<http://www.nikken-kosakusho.co.jp/en>
e-mail : export@nikken-kosakusho.co.jp

■ Please give your order to the following agent.

D.NA.1

● Specifications are subject to change without notice.