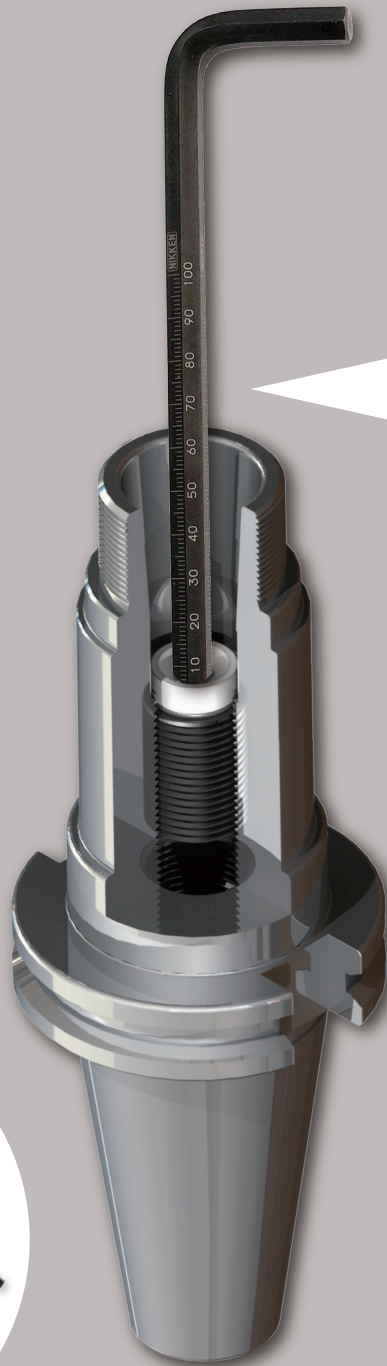


NIKKEN

SK Scale Wrench

QUICK & EASY SET-UP TOOL for NIKKEN SLIM CHUCK

NEW



**Wonderful Integration
of Scale and Wrench**



**SK Scale Wrench
LINE-UP**

**Reduce
Adjustment Time !!**

NIKKEN

NIKKEN KOSAKUSHO WORKS, LTD.
5-1, 1-chome, Minamishinden, Daito-shi, Osaka-fu, Japan

Web: www.nikken-kosakusho.co.jp/en
Tel: +81-(0)72-869-5820 Fax: +81-(0)72-869-6220
e-mail: export@nikken-kosakusho.co.jp

SK SCALE WRENCH for NIKKEN SLIM CHUCK



Hexagon

Code No.	Corresponding Slim Chuck	Hexagon size
SKWR-2- 95L	Available for standard center-thru, high pressure center thru	2
-3-101L		3
-4-110L		4
-5-120L		5
-6-133L		6
-8-154L		8

SK Scale Wrench for Center-thru adjust screw

Style	Code No.	Adjust screw Code No.	ID	Cutting tool shank dia.
SK10	SKWR-3-101L	SKG-12H	φ4	φ6~
	-2- 95L	-12HA	φ2.5	φ4~
SK13	SKWR-3-101L	SKG-15H	φ4	φ6~
	-2- 95L	-15HA	φ2.5	φ4~
SK16	SKWR-3-101L	SKG-12H	φ4	φ6~
	-2- 95L	-12HA	φ2.5	φ4~
	-6-133L	-18H	φ7.2	φ10~
SK20	SKWR-3-101L	SKG-12H	φ4	φ6~
	-2- 95L	-12HA	φ2.5	φ4~
	-5-120L	-22H	φ8	φ10~
SK25	SKWR-3-101L	SKG-12H	φ4	φ6~
	-2- 95L	-12HA	φ2.5	φ4~
	-8-154L	-28H	φ12	φ16~

Flathead screwdriver



Code No.	Corresponding Slim Chuck	Style
SKWR-DR-120L	Standard Slim Chuck	Flathead screwdriver type

SK Scale Wrench for Standard adjust screw

Style	Code No.	Adjust screw Code No.	Corresponding Slim Chuck Code No.
SK 6	SKWR-DR-120L	SKG- 8	ALL SK6
SK10		SKG-12L	ALL SK10 except below
		-12S	BT30-SK10-45, HSK50A-SK10-90, HSK63F-SK10-90
SK13		SKG-15	ALL SK13
SK16		SKG-18L	ALL SK16 except below
		-12	BT30-SK16-90
		-12L	BT30-SK16-60
SK20		-18S	BT40-SK16-60
		SKG-22	ALL SK20 except below
		-12	BT30-SK20-90
SK25		-12L	BT30-SK20-75
		-12S	BT30-SK20-60
	SKG-28	ALL SK25 except below	
	-12	BT30-SK25-90, BT40-SK25-75	
		-12MF	NC5-46-SK25-90

SK Scale Wrench for high pressure coolant thru Slim Chuck adjust screw

Style	Code No.	Adjust screw Code No.	ID	Cutting tool shank dia.	Corresponding Slim Chuck Code No.
SK 6	SKWR-2- 95L	SKG 6- 6HG	φ2.5	φ4~	ALL SK 6C/SK 6F
SK10	SKWR-4-110L	SKG10-10HG	φ4	φ6~	ALL SK10C/SK10F
	SKWR-2- 95L	-10HGA	φ2.5	φ4~	
SK13	SKWR-4-110L	SKG13-10HG	φ4	φ6~	ALL SK13C/SK13F
	SKWR-2- 95L	-10HGA	φ2.5	φ4~	
SK16	SKWR-6-133L	SKG16-12HG	φ7.2	φ10~	ALL SK16C/SK16F except below
		-12HGB			BT40-SK16F-90
		-10HG			HSK40A-SK16C-120, HSK50A-SK16C-120, HSK63A-SK16C-120, 150, HSK100A-SK16C-120, NC5-46-SK16C-90, -120, NBT40-SK16C-60, NBT30-SK16C-75
	SKWR-3-101L	-12HGE	φ3.5	φ5~	ALL SK16C/SK16F except below
		-12HGA			BT40-SK16F-90
		-12HGBA			HSK40A-SK16C-120, HSK50A-SK16C-120, HSK63A-SK16C-120, 150, HSK100A-SK16C-120, NC5-46-SK16C-90, -120, NBT40-SK16C-60, NBT30-SK16C-75
SK20	SKWR-5-120L	SKG20-18HG	φ6.8	φ10~	ALL SK20C/SK20F except below
		-12MFHG			NC5-46-SK20C-90, NC5-53-SK20C-90, HSK63A-SK20C-120, 135
		-12HG			NC5-46-SK20C-120, NC5-53-SK20C-120, NBT30-SK20C-90, HSK100A-SK20C-150, -200
		-12HGE			NBT30-SK20C-75
		-16HG			NBT40-SK20C-60
-18HGB	BT40-SK20F-90				
SK25	SKWR-8-154L	SKG25-24HG	φ12	φ16~	ALL SK25C/SK25F except below
		-24HGA			BT40-SK25F-120, BT50-SK25F-105
		-18HGC			BT40-SK25F-90
		-18HGD			BT40-SK25C-90, NC5-63-SK25C-135, NC5-85-SK25C-135, NBT40-SK25C-90
		-18HGE			HSK63A-SK25C-135, HSK100A-SK25C-145, NBT40-SK25C-75