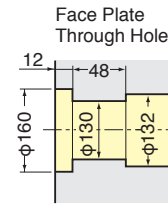
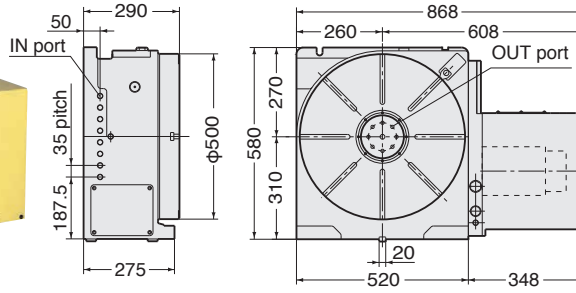
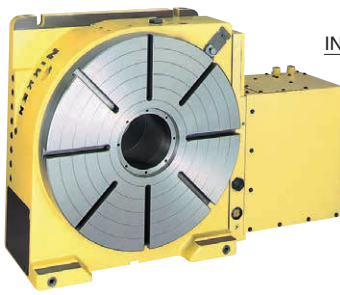


CNC501, 601, 803, 1003

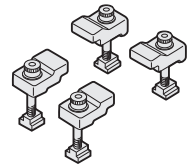


External dimensions depend on the type of the servo motor. Indicated dimensions are in case of FANUC. Please contact us for CAD files (2D:DXF, 3D:PARASOLID).

CNC501

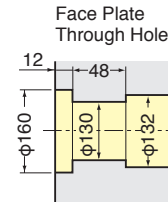
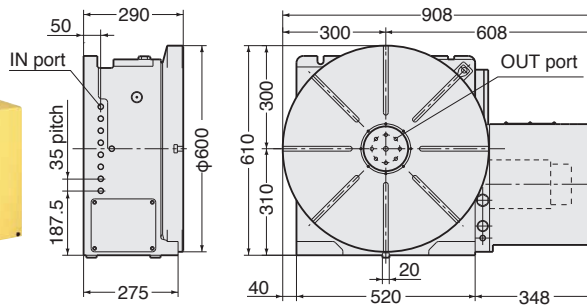
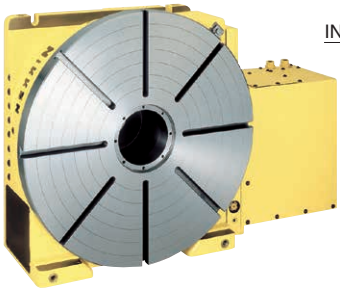


Clamp Device

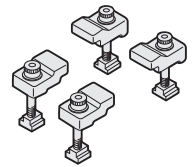


Rotary joint shown in layout is optional.

CNC601

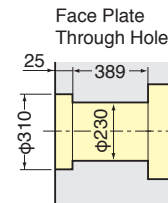
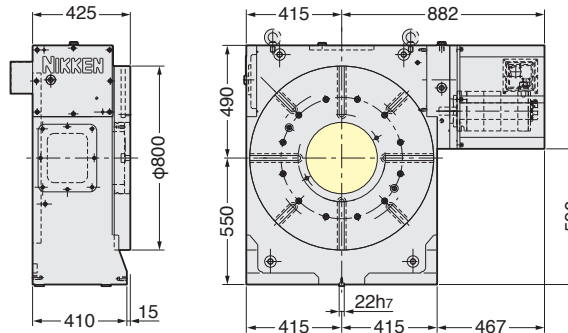


Clamp Device

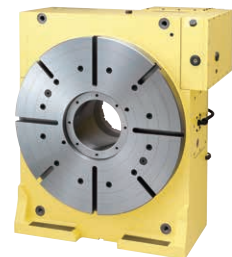
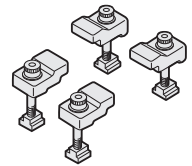


Rotary joint shown in layout is optional.

CNC803



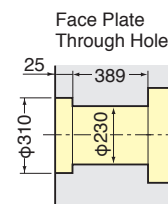
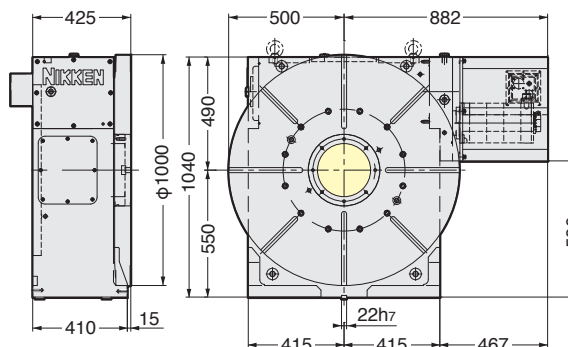
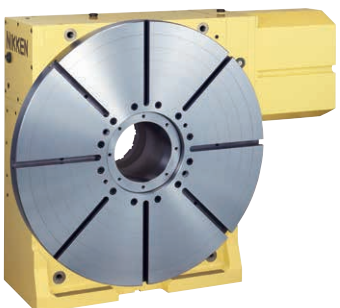
Clamp Device



CNC803B

CNC803 : the servomotor is mounted at back side, suitable for the application for pallet on Horizontal machines.

CNC1003



Clamp Device

