

Faceplate diameter: 206 mm, work swing diameter: 250 mm, rotary/tilting model

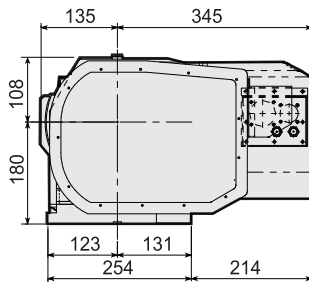
5AX-RED200-250

Rotary joint (max. number of ports: 5+1) and Nikken's most powerful pneumatic brake mechanism, named "mechanical booster", can also be mounted.

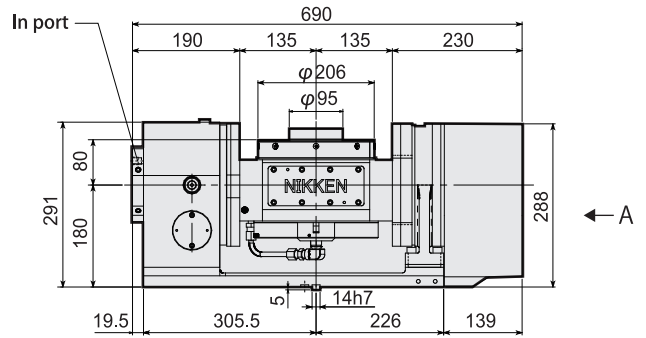
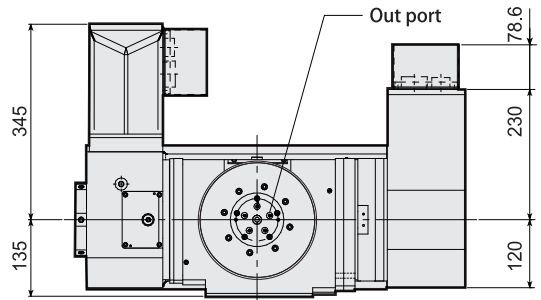
NEW



MECHANICAL
inside
BOOSTER



Arrow view : A



★ The figure shows a model with an optional rotary joint.

Faceplate diameter: 206mm, work swing diameter: 500mm, rotating and tilting models

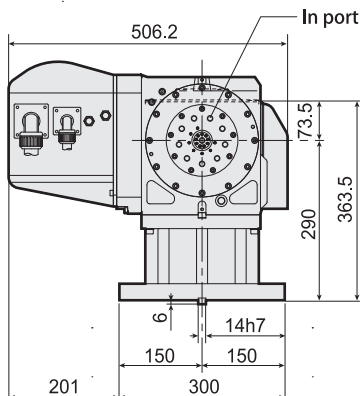
5AX-RED200-500

Rotary joint (max. number of ports: 9+1) and Nikken's most powerful pneumatic brake mechanism, named "mechanical booster", can also be mounted.

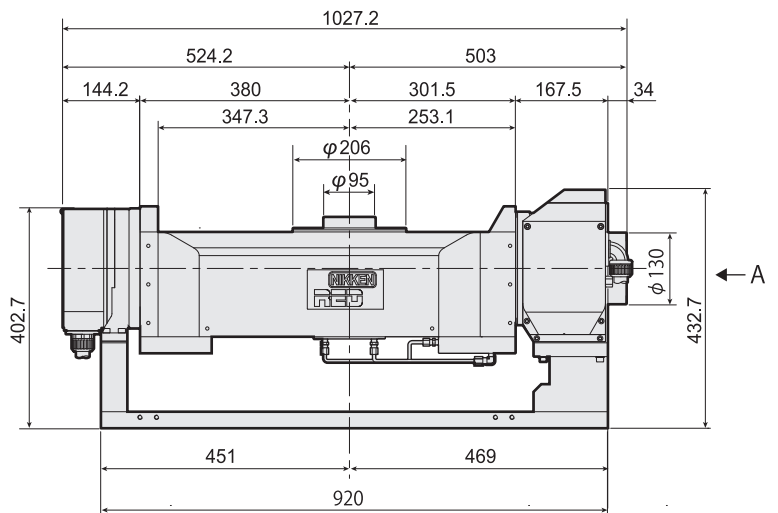
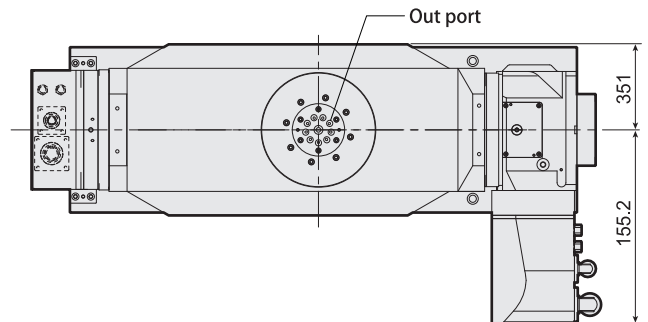
NEW



MECHANICAL
inside
BOOSTER



Arrow view : A



★ The photo and figure show the model with optional rotary joint.