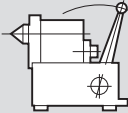
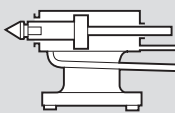
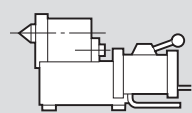
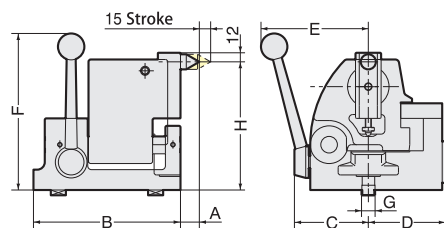


## ■ Tailstocks line-up

Table Model	Center Height	MANUAL	PNEUMATIC / HYDRAULIC	HYDRAULIC
				
		Stroke : 15mm	Stroke : 60mm	Stroke : 100mm
RED200	135	P-125 S	PBA-135	—
RED300	170	P-170S	PBA-170	H-170S
RED400	230	P-230S	—	H-230S

### Manual Tailstock



Code No.	H: Center Height	A	B	C	D	E	F	G	Weight (kg)
P-125S	130~140	27	150	76	74	120	210	14	11.5
P-170S	160~180	25	195	98	102	145	210	18	22.5
P-230S	220~240	25	195	98	102	145	250	18	27

- ★ The center height can be adjusted. Please refer to Center Height H on the table.
- ★ Left hand type is available for all models.
- ★ For P-170S and P-230S, 5 pcs of changeable centers are included.
- ★ Live center can be applied.

### Changeable Center

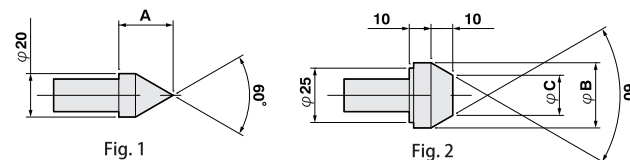


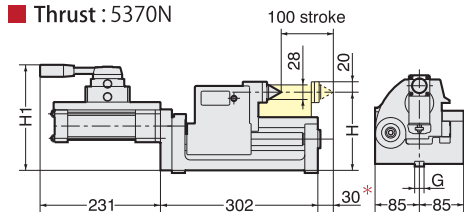
Fig. 1

Fig. 2

Code No.	Fig.	A	B	C
PC-2	1	25	—	—
PC-3	1	50	—	—
PC-4	2	—	30	18.45
PC-5	2	—	40	28.45
PC-6	2	—	50	38.45

### Hydraulic Tailstocks

- Hydraulic : 3.5MPa
- Thrust : 5370N

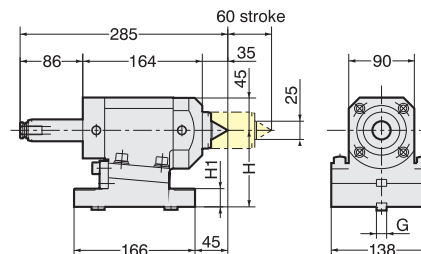


Code No.	H: Center Height	H <sub>1</sub>	G	Weight (kg)
H-170S	160~180	211	18	35
H-230S	220~240	271	18	45

- ★ The center height can be adjusted. Please refer to Center Height H on the table.
- ★ The rotary center is built-in.
- \* MAX. work piece diameter must be smaller than φ130mm, when the stroke of changing the work piece is more than 30mm marked.

### Pneumatic / Hydraulic both usable Tailstocks

- Pneumatic : 0.5MPa, Hydraulic : 2MPa
- Thrust Pneumatic : 1176N, Hydraulic : 4733N



Code No.	H: Center Height	H <sub>1</sub>	G	Weight (kg)
PBA-135	135	55	14	20
PBA-170	170	90	18	24.5

- ★ The center height can be adjusted. (Adjustable range : 0.35mm)
- ★ The rotary center is built-in.
- ★ MT (Morse Taper) type quill is also available. Please contact with us.
- ★ The different length of the stroke is available. Please contact us.

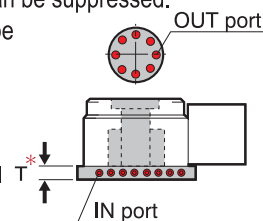
## ■ Rotary Joints line-up

Table Model	Type	MAX. Number of Ports	T*	Rotary Joint Code. No.
RED200	Flange mount type	9+1	34	RN- RE200 SD-9 +1-F
RED300	Flange mount type	10+1	29.5	RN- RE300 SD-10+1-F
RED400	Built-in type	10+1	—	RN- RE400 SD-10+1-B
RED500H	Built-in type	12+1	—	RN- RE500 SD-12+1-B
5AX-RED200-250	Flange mount type	5+1	32	RN-AXRE2025SD- 5+1-A
5AX-RED200-500	Flange mount type	9+1	34	RN-AXRE2050SD- 9+1-A

### ■ Flange mount type rotary joints

The rearward protrusion can be suppressed. The IN port positions can be selected from 4 sides, and can be placed on a side without interference.

Dimensional Change : Small



### ■ Built-in type rotary joints

The most space-efficient type. The rotary joint can be mounted on the standard dimensions.

Dimensional Change : Non

